



2024 Product Brochure v1.0





At Abtech Safety, our mission goes beyond supplying safety solutions – we care about empowering workers to excel in environments of elevated risks. Established in 1991, our unwavering commitment revolves around safeguarding those working at heights and within confined spaces. We exist to enable a world where safety isn't a compromise but a fundamental expectation.



Mitigating Risks

We comprehend the challenges inherent in high-risk workplaces. We pledge to mitigate these risks, ensuring every worker returns home unharmed after their shift. We recognise that behind every safety requirement is a person, a family, and a future. When workers are required to venture into hazardous spaces, we aim to instil confidence, reassuring them with equipment and solutions expressly designed for their well-being and protection.

Dependable Solutions

Working at heights or within confined spaces presents an array of complexities. Our objective is to confront these challenges with dependable, top-tier safety solutions. In order to understand the ever-evolving nature of these precarious work environments, Abtech Safety extends beyond equipment supply; we cultivate partnerships. As part of Cresto Alliance, we operate within a network of like-minded safety companies. Our MD is well-connected within the industry and actively campaigns to improve safety standards. We also regularly check in with our extensive distribution network to help improve our solutions and services. This collaborative approach provides invaluable insights, allowing us to tailor our solutions to meet the demands of the industries we proudly serve.

Safer, Together

We envision a future where all height and confined space workers execute their duties with minimal risk; where worksites are secure, and workers are shielded. To us, safety isn't just a harness, a lanyard, or an anchor point; it's a commitment. A commitment to care, innovate and safeguard lives through our dedication to excellence.

Part of Cresto Alliance

Cresto Alliance brings together the world's leading safety experts. Working as one, Cresto Group's market leading safety companies stand shoulder to shoulder with a shared mission - to protect height workers with safety and rescue solutions, when and where it is needed most.

Abtech Safety are part of a collection of global companies who develop and share solutions, knowledge, and skills in order that you, as a valued customer, can benefit from our combined experiences. This collaborative approach combined with an uncompromising commitment to safety is why we are trusted to protect lives.

CRESTO ALLIANCE



Quality & Compliance

International Standards (ISO)

Abtech Safety is committed to delivering excellence at every level. ISO 9001:2015 certification underpins our dedication to quality management and customer satisfaction.

This globally recognised standard serves as a blueprint for organisations striving to consistently provide products and services that not only meet customer needs but also comply with statutory and regulatory requirements. At Abtech Safety, we effectively implement this system, fostering continuous improvement, and ensuring adherence to customer and regulatory demands.

All PPE products manufactured by Abtech Safety strictly adhere to the provisions of PPE Regulation (EU) 2016/425. These are supervised under the notified body, Satra Quality Assurance.

Abtech Safety | EN Standards

EN353-2	EN354	EN355	EN358
EN360	EN361	EN362	EN795
EN813	EN1496	EN1497	EN1891-A
EN12278	EN12492		

Product Conformance (CE/UKCA)

Abtech Safety promises to always deliver on quality. This is why the products we manufacture proudly bear the CE and UKCA marks. These marks signify compliance with European health, safety, and environmental protection legislation, ensuring our products meet the highest standards and are eligible for sale not only in the EU and the UK.

To our customers, this provides peace of mind. When you choose Abtech Safety, you're choosing products that adhere to stringent regulations, assuring you of their safety and reliability. Our CE and UKCA marks signify that our products have undergone rigorous testing and conform to the most stringent quality and safety standards. All PPE products conform to European Standards and are subject to EC Certification of Conformity, issued by SATRA ID 2777.



These marks are a testament to our commitment to delivering products that consistently meet and exceed customer expectations.

Industry Partners

Abtech Safety is proud to work alongside a network of industry partners who share our commitment to elevating safety standards including Work at Height Safety Association (WAHSA). WAHSA is the UK lead body representing the interests of manufacturers, assemblers, installers, distributors and end users of personal protection equipment used for work at height and rescue.



Made In Britain

Abtech Safety are proud to be a member of Made in Britain. This prestigious affiliation underscores our commitment to producing high-quality safety equipment right here in the UK. When you choose Abtech Safety, you're choosing UK manufactured products that uphold the highest standards of craftsmanship, innovation, and safety.

But the benefits extend beyond our shores. For our customers, this means reliability, consistency, and trust. Our membership in Made in Britain assures you that our products are crafted with precision, adhere to rigorous quality controls, and support local industries and jobs.

We understand that safety is more than equipment and tools; it's about trust. When you see the Made in Britain mark, you can have confidence that you're investing in safety gear that's been manufactured with care and expertise. Choosing Abtech Safety means choosing British excellence, and your safety is our priority.



Procurement made simpler from spring 2024. Abtech Safety is making purchasing easier - with a few clicks, registered distributors can order height safety and confined space solutions online. Ask your Abtech representative or find out more at abtechsafety.com.

Placing Orders

All orders must be issued in writing by email or post

Email: sales@abtechsafety.com

Post: Abtech Safety Ltd
Unit 1&2, Parkway Business Centre
Deeside Industrial Park CH5 2LE

Office hours: Monday to Thursday, 8.30am to 4.30pm
Friday, 8.30am to 2.00pm

All orders will be issued to account holders only. If you do not have an account you can request an application for credit via the above methods of contact. Alternatively you can request for a proforma invoice, which must be paid in full before the despatch of any goods.

Minimum order quantity £35.00 before carriage and VAT
Export minimum order quantity £250.00 - Ex Works

UK Delivery

Orders received before 12pm will be sent next day before 5.30pm.

Delivery subject to availability and account status. Timed delivery is available at a surcharge and subject to availability and account status.

We are not open to the general public nor do we operate a Trade Counter. If you do, however wish to collect an order, please specify on your PO and we will contact you to make arrangements.

Payment

Account Holders

Details of payment accounts will be specified on your invoice.



VAT No. 595703115

Co. Reg 2656103

Tripods	5
Harnesses	12
Lanyards & Slings	19
Fall Protection	25
Winches	28
Specialist Systems	32
Rescue & Evacuation	34
Rope Rigging	44
Davits	51
Connectors	62
Bags & Helmets	68
Terms & Conditions	71
Product Index	74
Note Pad	76



Tripods

Discover the Tripod T3 series, the intersection of cutting-edge engineering and unparalleled functionality. Ideal for rescue missions, working at height, and confined space projects, both the Tripod T3 and RT3 models merge innovation with real world application. Experience heightened safety paired with uncompromising ease of use.

T3
£853.79



Two Person Tripod

- ▶ 3 overhead pulleys
- ▶ 3 underslung eyes,
- ▶ Telescopic legs
- ▶ Leg span 110-170cm
- ▶ Height 140-210cm
- ▶ Matching carry bag **T07** available to order (see page 11)

Conformance:
EN795 Type B

RT3
£961.46



Two Person Rescue Tripod

- ▶ 3 overhead pulleys
- ▶ 3 underslung swivel eyes
- ▶ Detachable telescopic legs
- ▶ Leg span 130-200cm
- ▶ Height 200-280cm
- ▶ Matching carry bag **RT07** available to order (see page 11)

Conformance:
EN795 Type B

TRIPOD T3[®]

3 overhead pulleys for up to 11mm rope

3 underslung attachment point eyes

Rubber lined feet

Telescopic legs can be individually adjusted for uneven ground

T3

Two Person Tripod

- ▶ Lightweight aluminium
- ▶ Conformance: EN795 Type B

If you require your kit with an RT3 instead of a T3 tripod, amend code to **CSRT*KIT** (£105.00 to add to kit)

CST1KIT
£1,845.99



Confined Space Kit

Contains:

- ▶ Two person tripod (T3)
- ▶ TORQ 15m fall arrest winch (AB15RT)
- ▶ TORQ to tripod bracket (T05T)

Conformance:

EN795, EN360, EN1496

CST2KIT
£1,905.65



Confined Space Kit

Contains:

- ▶ Two person tripod (T3)
- ▶ TORQ 15m fall arrest winch (AB15RT)
- ▶ TORQ to tripod bracket (T05T)
- ▶ Rescue harness (ABRES)

Conformance:

EN795, EN360, EN1496, EN361, EN1497

CST3KIT
£4,799.31



Confined Space Kit

Contains:

- ▶ Two person tripod (T3)
- ▶ 27m personnel winch (18561)
- ▶ 2x tripod clamp (ALKO)

Conformance:

EN795, EN1496

CST4KIT
£4,859.57



Confined Space Kit

Contains:

- ▶ Two person tripod (T3)
- ▶ 27m personnel winch (18561)
- ▶ Two tripod clamps (ALKOS)
- ▶ Rescue harness (ABRES)

Conformance:

EN795, EN1496, EN361, EN1497

CST5KIT
£3,000.86



Confined Space Kit

Contains:

- ▶ Two person tripod (T3)
- ▶ 30m personnel winch (60005)
- ▶ Tuff winch to tripod bracket (T05TW2)

Conformance:

EN795, EN1496

CST6KIT
£3,060.51



Confined Space Kit

Contains:

- ▶ Two person tripod (T3)
- ▶ 30m personnel winch (60005)
- ▶ Tuff winch to tripod bracket (T05TW2)
- ▶ Rescue harness (ABRES)

Conformance:

EN795, EN1496, EN361, EN1497

CST7KIT

£2,374.01



Confined Space Kit

Contains:

- ▶ Two person tripod (T3)
- ▶ 30m fall arrest winch (AB30RT)
- ▶ AB30RT to tripod bracket (T05T-30)

Conformance:

EN795, EN360, EN1496

CST8KIT

£2,433.67



Confined Space Kit

Contains:

- ▶ Two person tripod (T3)
- ▶ 30m fall arrest winch (AB30RT)
- ▶ AB30RT to tripod bracket (T05T-30)
- ▶ Rescue harness (ABRES)

Conformance:

EN795, EN360, EN1496, EN361, EN1497

T05T-30
£152.65



AB30RT to Tripod Bracket

Conformance:
EN795 Type A

T05T
£116.12



AB15RT to Tripod Bracket

Conformance:
EN795 Type A

ALKO
£23.47



Tripod Leg Clamp

Conformance:
N/A

T05TW2
£178.86



Tuff Winch to Tripod Bracket

Suitable for **60005**, **60011** or **60257**

Conformance:
EN795 Type A

T07
£98.37



Tripod Carry Bag

Comes with velcro securing straps

Conformance:
N/A

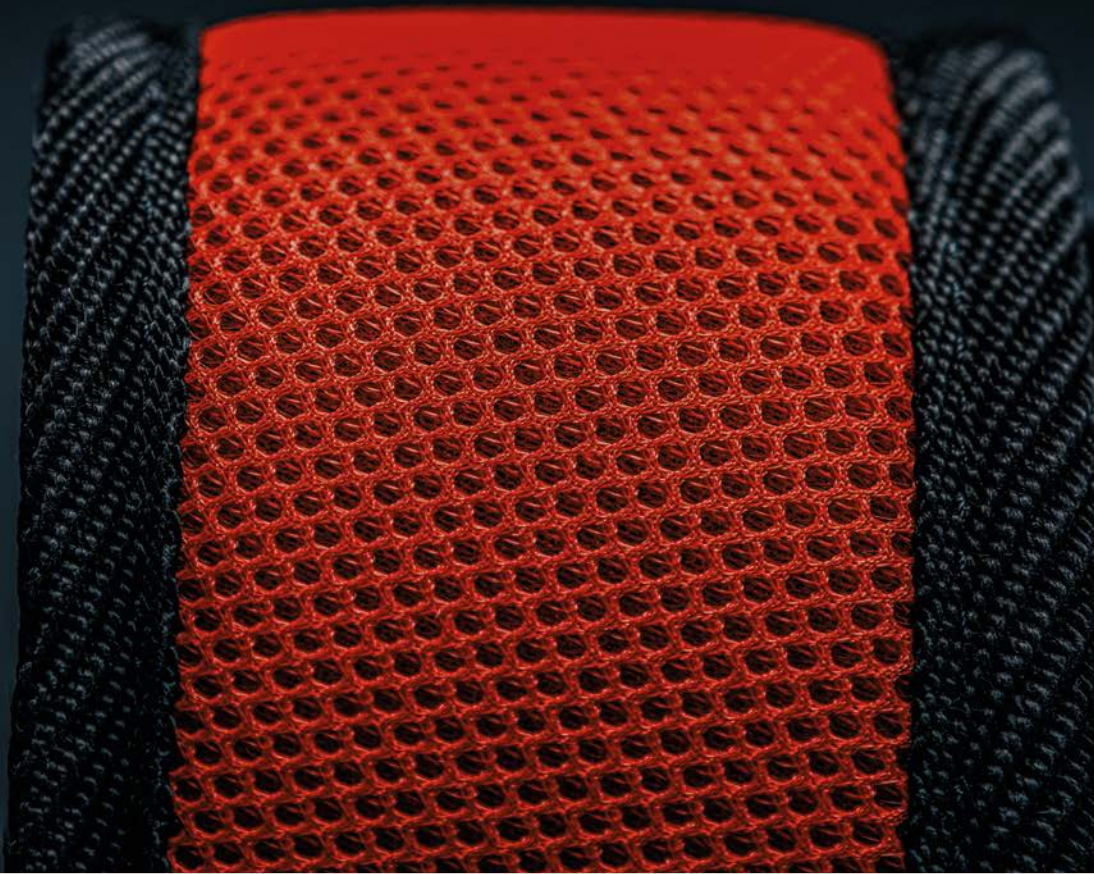
RT07
£107.31



Rescue Tripod Carry Bag

Comes with velcro securing straps

Conformance:
N/A



Harnesses

Abtech Safety harnesses offer safety and comfort for professionals across diverse industries. Whether scaling wind turbines, navigating intricate access points, or tackling industrial challenges on work sites, these harnesses are your reliable companion. Crafted with precision, our range of harnesses offer not just support, but peace of mind. Your safety is paramount, and Abtech Safety harnesses are your steadfast partner in ensuring it.

AB10

£42.89



Single Point Harness

- ▶ Rear 'D' attachment point
- ▶ Small (32-37" chest): **AB10-SML**
- ▶ Standard (38-45" chest): **AB10-STD**
- ▶ Large (46-48" chest): **AB10-XL**

Conformance:
EN361

AB20

£50.47



Two Point Harness

- ▶ Rear 'D' and chest 'D' attachment point
- ▶ Small (32-37" chest): **AB20-SML**
- ▶ Standard (38-45" chest): **AB20-STD**
- ▶ Large (46-48" chest): **AB20-XL**

Conformance:
EN361

AB20SL

£53.12



Two Point Harness

- ▶ Rear 'D' and chest soft loop attachment point
- ▶ Small (32-37" chest): **AB20SL-SML**
- ▶ Standard (38-45" chest): **AB20SL-STD**
- ▶ Large (46-48" chest): **AB20SL-XL**

Conformance:
EN361, EN1497

ABRES

£60.26



Rescue Harness

- ▶ Rear 'D' and chest 'D' attachment point
- ▶ Overhead 'D' for lifting and lowering
- ▶ Small (32-37" chest): **ABRES-SML**
- ▶ Standard (38-45" chest): **ABRES-STD**
- ▶ Large (46-48" chest): **ABRES-XL**

Conformance:
EN361, EN1497

ABRESHV

£68.43



Hi Vis Rescue Harness

- ▶ Rear 'D' and chest 'D' attachment point
- ▶ Overhead 'D' for lifting and lowering
- ▶ Small (32-37" chest): **ABRESHV-SML**
- ▶ Standard (38-45" chest): **ABRESHV-STD**
- ▶ Large (46-48" chest): **ABRESHV-XL**

Conformance:
EN361, EN1497

ABELITE
£143.03



Access Elite Harness

- ▶ Breathable jacket and quick connect leg buckles for ease of donning
- ▶ Complete with 30cm rear extension for use with BA

Conformance:
EN361, EN1497

ABPRO
£216.34



Access Pro Harness

- ▶ Rear and thoracic attachment
- ▶ Ventral and side links for work positioning
- ▶ Shoulder, waist and leg pads

Conformance:
EN361, EN358, EN1497, EN813

1136
£344.76




Energy Pro Harness

This harness is developed with and for people within industrial tower and pole climbing industry.

Conformance:
EN361, EN358, EN813

1136WIND
£304.14




Energy Pro Wind Harness

This is a customised version of the Energy Pro harness, designed for work in wind turbines.

Conformance:
EN361, EN358, EN813

1118
£220.00




Fusion Active Harness

Fusion Active is a slim premium harness, developed for maximum comfort and simplicity of use.

Conformance:
EN361, CNP/P11.043 Rev2

1137
£320.88




Fusion Active Wind Harness

Fusion Active & Wind is developed together with professionals in the wind power industry to meet the needs of the wind power technician in their work.

Conformance:
EN361, EN358, EN813

138
£206.00




Sirocco Harness

This harness has a clear focus on comfort and reliability the Sirocco range is made in the UK to meet the needs of workers at height.

Conformance:
EN361, EN358

UH232
£438.41




Sirocco Harness

The harness' fixed shoulder pads with double adjustment lightweight mesh and fabric belt ensure comfortable use.

Conformance:
EN361, EN358, EN813

UH238
£404.08




Sirocco Harness

The harness includes five attachment points: two side, two front and one rear, quick release buckles and breathable mesh padding for increased comfort.

Conformance:
EN361, EN358, EN813

UH238LB
£641.77




Sirocco Harness

- ▶ Y Harness , 4 attachment points
- ▶ Sliding D rings to allow movement while attached in work position
- ▶ Leather waist belt with brushed leather inner

Conformance:
EN361, EN358, EN813

AB10KIT
£101.30



Working at Height Kit

Contains:

- ▶ Single point harness (AB10)
- ▶ 2m fall arrest lanyard (ABL2.0SH)
- ▶ Kit bag (ABBAG)

Conformance:

EN361, EN354, EN355

AB20SLKIT
£111.54



Working at Height Kit

Contains:

- ▶ Two point harness (AB20SL)
- ▶ 2m fall arrest lanyard (ABL2.0SH)
- ▶ Kit bag (ABBAG)

Conformance:

EN361, EN355, EN354

AB20LTW
£125.71



Working at Height Kit

Contains:

- ▶ Two point harness (AB20)
- ▶ 1.5 metre twin fall arrest lanyard (ABLTW1.5SH)
- ▶ Kit bag (ABBAG)

Conformance:

EN361, EN355, EN354

AB10ADJ
£96.81



Access Platform Kit

Contains:

- ▶ Single point harness (AB10)
- ▶ Adjustable restraint lanyard (ABRSTADJ)
- ▶ Kit bag (ABBAG)

Conformance:

EN361, EN358

COMBI
£120.57



Combination Harness Kit

Contains:

- ▶ Single point harness (AB10)
- ▶ Combi lanyard (ABLRST)
- ▶ Kit bag (ABBAG)

Conformance:

EN361, EN355, EN354

AB10/2.4T
£138.57



Fall Arrest Kit

Contains:

- ▶ Single point harness (AB10)
- ▶ 2.4 metre webbing fall arrest device (AB2.4T)
- ▶ Kit bag (ABBAG)

Conformance:

EN361, EN360

ABJ-Y/ABJ-O
£20.78



Hi-Vis Jacket

- ▶ Opening for harness attachment points.
- ▶ Velcro loops for fixing in harness.
- ▶ Yellow: code **ABJ-Y** or orange: code **ABJ-O**.

Conformance:
EN471

ABWP
£54.60



Work Positioning Belt

Waist belt with side attachment points for work positioning and three tool loops. Can be added to any industrial harness.

Conformance:
EN358

ABLSS
£23.61



Leg Suspension Strop

Designed to hold a person in a vertical position after a fall, enabling them to stand. Complete with connector.

Conformance:
Not PPE

ABNAP
£78.57



Rescue Nappy

Loops positioned to enable lifting adults or children.

Conformance:
Not PPE

ABBS
£56.49



Bosuns Seat

For a seated position when in a full body harness with belt and side 'D's.

Conformance:
Not PPE

ABBC
£292.97



Bosuns Chair

For a seated position when in a full body harness. Complete with foot rest and tool pockets.

Conformance:
Not PPE



Lanyards & Slings

Whether you're in need of fall arrest solutions, restraint systems, or work positioning support, Abtech Safety offers a wide array of lanyards and slings to meet your safety needs. These products are engineered for reliability, comfort, and compliance, ensuring your safety at every elevation. Discover the right safety solutions for your specific requirements. Your safety is our priority.

ABL2.0
£43.55



Fall Arrest Lanyard

- ▶ Complete with 2 x oval screwgate (**K10SG**)
- ▶ Shock absorbing pack to minimise forces
- ▶ For 1x oval screwgate and 1x snap hook order **ABL2.0SH — £62.61**

Conformance:
EN355, EN354

ABLTW1.5
£67.96



Twin Fall Arrest Lanyard

- ▶ Complete with 3 x oval screwgate (**K10SG**)
- ▶ Shock absorbing pack to minimise forces
- ▶ For 1x oval screwgate and 2x snap hook order **ABLTW1.5SH — £84.99**

Conformance:
EN355, EN354

ABSRL1.5SH
£108.92



Single Rope Lanyard

- ▶ Complete with 1x oval screwgate (**K10SG**) and 1x snap scaffold hook (**SSE/SSH**)
- ▶ Shock absorbing pack to minimise forces

Conformance:
EN355, EN354

ABTRL1.25SH
£195.58



Double Rope Lanyard

- ▶ Complete with 1x oval screwgate (**K10SG**) and 2x snap scaffold hook (**SSE/SSH**)
- ▶ Shock absorbing pack to minimise forces

Conformance:
EN355, EN354

1602
£249.52




Fusion Pro Twin-Flex

- ▶ Elastic tails, aluminium alloy connectors
- ▶ Approved for 140 kg

Conformance:
EN355

TL507-1.8
£187.51




Sirocco Mini Shock Lanyard

- ▶ 1.95m cut resistant rope
- ▶ Shock absorber rated to fall factor 2, supports 140kg
- ▶ Double action black snap hook – tie back loop

Conformance:
EN355, EN1891A, EN362:2004/T

ABLRST
£60.99



Combi Lanyard

- ▶ Can be used for fall arrest or restraint
- ▶ Complete with 3 x oval screwgate (**K10SG**)
- ▶ Restraint length: 1.75m, shock absorbing length: 1.25m or 1.95m

Conformance:
EN355, EN354

ABRST
£23.26—£25.93



Restraint Lanyard

- ▶ Complete with 2 x oval screwgate (**K10SG**)
- ▶ **ABRST50 — £23.26** (0.5m long) **ABRST150 — £25.03** (1.5m long)
- ▶ **ABRST100 — £24.15** (1.0m long) **ABRST200 — £25.93** (2.0m long)
- ▶ Other lengths and connectors are available to order

Conformance:
EN354

ABRSTADJ
£39.03



Adjustable Restraint Lanyard

- ▶ Complete with 2 x oval screwgate (**K10SG**)
- ▶ Adjusts from 1.25m to 1.75m

Conformance:
EN358

2342
£88.76




Simo S Work Positioning Lanyard

- ▶ A work positioning lanyard with a simple one-hand adjustment
- ▶ Multi certified in different work environments

Conformance:
EN354, EN358, EN795

90115-BSH
£254.96




Chokestrap Pole Choker

- ▶ Fitted with 2-stage black snaphook
- ▶ Standard length suitable for poles with a 180-350mm diameter
- ▶ Short length suitable for poles with a 150-215mm diameter

Conformance:
ENA TS 43-123 Class A1

90115-SP
£254.96




Chokestrap Pole Choker

- ▶ Fitted with 2-stage black snaphook and wrapped webbing handles
- ▶ Standard length suitable for poles with a 180-350mm diameter
- ▶ Short length suitable for poles with a 150-215mm diameter

Conformance:
ENA TS 43-123 Class A1

90115-WPS
£254.96




Chokestrap Pole Choker

- ▶ Fitted with 2-stage karabiner
- ▶ Standard length suitable for poles with a 180-350mm diameter
- ▶ Short length suitable for poles with a 150-215mm diameter

Conformance:
ENA TS 43-123 Class A1

120POLECAT
£327.49




Polecat Pole Choker

- ▶ Fitted with captive karabiners
- ▶ Suitable for poles with a 125-285mm diameter
- ▶ Integrated shock absorber and fall arrest indicators

Conformance:
ENA TS 43-123 Class A1

ABRAT
£144.20



Rope Rat

- ▶ Adjustable work positioning lanyard
- ▶ Complete with hook and protective cover
- ▶ 2m long (also available in 5m and 10m Lengths)

Conformance:
EN358

AB---R
£8.04—£11.63



Round Sling

- ▶ 25mm webbing
- ▶ **AB40R — £8.04** (0.4m long) **AB200R — £10.73** (2.0m long)
- ▶ **AB120R — £9.84** (1.0m long) **AB240R — £11.63** (2.4m long)
- ▶ Other lengths are available to order

Conformance:
EN795 Type B

AB---HV
£19.67—£21.46



Hi Vis Anchor Sling

- ▶ Hi vis and complete with oval screwgate (**K10SG**)
- ▶ **AB100HV — £19.67** (1.0m long) **AB200HV — £21.46** (2.0m long)
- ▶ **AB150HV — £20.57** (1.5m long)
- ▶ Other lengths are available to order

Conformance:
EN795 Type B

WS---
£22.25—£27.61



Wire Anchor Sling

- ▶ Complete with PVC sleeve
- ▶ **WS100 — £22.25** (1.0m long) **WS200 — £27.61** (2.0m long)
- ▶ **WS150 — £24.25** (1.5m long)
- ▶ Other lengths are available to order

Conformance:
EN795 Type B

264901309
£31.12
Luna TOOLS



Wrist Strap Swivel Snap Hook

- ▶ Slim and flexible wrist strap with Velcro fastening
- ▶ Maximum load: 2kg

Conformance:
Not PPE

292650108
£4.40
Luna TOOLS



Tool Holder with D-Ring

- ▶ Universal mounting that can be snared to a tool
- ▶ Maximum load: 4kg

Conformance:
Not PPE

301153607
£23.04
Luna TOOLS



Spiral Wire Three Set Kit

- ▶ Safety set with spiral wire, fastening ring and wire loop.
- ▶ Maximum load: 1kg

Conformance:
Not PPE

276860103
£32.59
Luna TOOLS



Lanyard Elastic

- ▶ Complete with two karabiners
- ▶ Energy dampening function
- ▶ Maximum load: 4kg

Conformance:
Not PPE

276870102
£15.70
Luna TOOLS

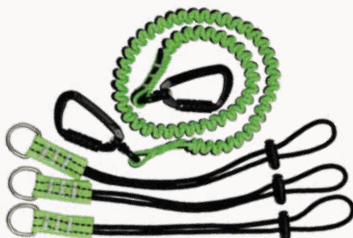


Lanyard Elastic

- ▶ Complete with loop karabiner
- ▶ Energy dampening function
- ▶ Maximum load: 6kg

Conformance:
Not PPE

264680117
£41.75
Luna TOOLS



Tool Tether Set with Ropes

- ▶ Includes elastic strap and three fixing cords with D-ring
- ▶ Energy dampening function
- ▶ Maximum load: 4kg

Conformance:
Not PPE



Fall Protection

Abtech Safety provides a variety of meticulously curated Fall Protection solutions to encompass a broad spectrum of top-tier safety solutions, from retractable type fall arresters and winches to rescue devices and specialist systems. Leading our line-up is the **TORQ®** series of retractable type fall arresters - including **TORQ Max**, **TORQ**, **TORQ Lite**, and **TORQ Micro**. This range has been engineered to offer certified protection, ease of use, and durability in a variety of height-work scenarios. Browse our range of solutions and empower your work at heights with unparalleled safety and confidence.

ABRL- / ABRL-W
£119.45—£544.09
TORQ



TORQ Life Fall Arrest Device

- ▶ Webbing SRL
- ▶ Plastic housing
- ▶ Indicator hook
- ▶ **ABRL03W** — **£119.45** (3m long)
- ▶ **ABRL06W** — **£137.84** (6m long)

or

- ▶ Wire SRL
- ▶ Swivel anchor eye
- ▶ Indicator hook
- ▶ **ABRL06** — **£312.97** (6m long)
- ▶ **ABRL10** — **£371.36** (10m long)
- ▶ **ABRL20** — **£544.09** (20m long)

Conformance:
EN360

AB15T
£606.72
TORQ



TORQ Fall Arrest Device

- ▶ Wire SRL
- ▶ 5mm galvanised cable
- ▶ Swivel anchor eye and indicator hook
- ▶ Also available with winch capabilities (**AB15RT**, page 29)

Conformance:
EN360, ANSI Z359.1

AB2.4T / TTW
£80.81—£163.12
TORQ



TORQ Micro Webbing Fall Arrest Device

- ▶ Webbing SRL
- ▶ Swivel indicator
- ▶ Snap hook
- ▶ **AB2.4T** — **£80.81** (single)
- ▶ **AB2.4TTW** — **£163.12** (twin)

Conformance:
EN360

AB30T
£927.71
TORQ



TORQ Max Retractable Fall Arrester

- ▶ Wire SRL
- ▶ Aluminium casing
- ▶ 5mm galvanised cable
- ▶ Also available with winch capabilities (**AB30RT**, page 29)

Conformance:
EN360

HAS18
£2,136.96



Fall Arrest/Auto Descent

- ▶ Wire SRL
- ▶ Complete with **IKV17** connector for hanging
- ▶ 5mm galvanised cable

Conformance:
EN360, EN341



Winches

Whether you're involved in rescue operations, maintenance tasks, or confined space projects, Abtech Safety have a winch that ticks every box. Engineered for heavy-duty challenges, these devices seamlessly pair with the T3 Tripods and our range of Tuff Built davit systems thanks to specialist brackets, designed to ensure a secure fit. Say goodbye to hauling headaches—Abtech Safety has you covered.

AB15RT
£894.72
TORQ



TORQ Fall Arrest Winch

- ▶ Can be used for fall arrest or as a winch
- ▶ 5mm galvanised cable
- ▶ Swivel anchor eye and indicator hook

Conformance:
EN360, EN1496, ANSI Z359.1

AB30RT
£1,391.55
TORQ



TORQ Max Fall Arrest Recovery Winch

- ▶ Aluminium casing
- ▶ 5mm galvanised cable

Conformance:
EN360, EN1496

18561
£3,922.05



27m Personnel Winch

Working load limit: 205kg

Conformance:
EN1496

60005
£1,998.52
TUFF BUILT



30m Personnel Winch

Working load limit: 141kg (282kg reeved)

Conformance:
EN1496

60011
£3,039.65
TUFF BUILT



45m Personnel Winch

Working load limit: 141kg (282kg reeved)

Conformance:
EN1496

60257
£924.50
TUFF BUILT



30m Materials Winch

Working load limit: 315kg

Conformance:
Not PPE

TORQ[®]

Brackets to attach to T3 tripod
and tuff davit range

150kg Rated Winch Capacity

Integrated carry handle on brackets

Swivel Eye for hanging applications
etched with serial number

AB15RT

15 Fall Arrest Winch

- ▶ Wide range of bases for various applications
- ▶ Conformance: EN360, EN1496, ANSI Z359.1

WINCHBAG
£69.75



Carry Bag for Winches

- ▶ Carry bag with solid wood base
- ▶ Features a zip closure and internal Velcro straps

EU39
£92.63



Winch Box

- ▶ Solid base
- ▶ Zip closure
- ▶ Internal velcro straps

TORQBAG
£69.75



Carry Bag for TORQ Devices

- ▶ Foam Inserts
- ▶ Suitable for storing and shipping



Specialist Systems

Abtech Safety's specialist systems are designed to tackle unique challenges in safety at heights, offering precision-engineered solutions for a variety of specialized applications. Our collection includes the 20m and 25m Horizontal Systems, the Complete Roofer Kit, and the Container Safe Kit, each tailored to include the optimum equipment that ensures safety, efficiency, and compliance. These systems are developed with your specific needs in mind, containing user-friendly equipment to create the ultimate in workplace safety.

HONOR-T
£3,581.18



25m Horizontal System

Designed for duo projects but can have up to 5 users.

Contains, amongst others:

- ▶ Two 15 metre retractable fall arresters (2x AB15T)
- ▶ Oval screwgate (K10SG)
- ▶ Scaffold twistlock (KH407)

Conformance:
EN795/A1 Class C, EN360

ABTL20-2
£268.68



20m Horizontal System

For up to two users.

Conformance:
EN795/A1 Class C

CONT
£586.44



Container Safe Kit

For working on top of shipping containers.

Contains:

- ▶ Two point harness (AB20)
- ▶ Rope with plastic eyes (ABR5)
- ▶ Fall arrest lanyard (ABL2.0)
- ▶ Kit bag (ABBAG)

Conformance:
Certified CE products used in this system

ROOFER KIT
£509.20



Complete Roofer Kit

Includes roof anchor, harness, rope, helmet, lanyard and bag.

Conformance:
Certified CE products used in this system



Rescue & Evacuation

At Abtech Safety, we're committed to elevating safety and efficiency in the most critical moments. Our Rescue and Evacuation solutions, headlined by the pioneering **SLIX**[®] stretcher range, are engineered for real-world challenges, ensuring readiness, versatility, and utmost care in rescue operations. From the adaptable SLIX 100 Rollable Rescue Stretcher to the SLIX 100XL for bariatrics, our stretchers cater to diverse needs with ease and precision. Complementing the SLIX[®] series, we offer Cresto Safety's robust RESQ RED Pro X and the compact Smartline X. These specialised systems demonstrate our commitment to innovative, user-friendly solutions. Each product is a testament to our dedication to provide Rescue workers with the right tools, technology, and tactical superiority.

SLIX[®]

Spinal splint attachment points

Reinforced eyelets for horizontal lifting

Colour coded straps

Reinforced eyelets for vertical lifting

Evenly distributed carry handles

Smooth, draggable material

Webbing loop for tag line or guide ropes

SLIX100

Rollable Rescue Stretcher

- ▶ Lightweight and rollable with user replaceable webbing
- ▶ Conformance: MDR 2017/745

SLIX100
£617.04
SLIX



Rollable Rescue Stretcher

- ▶ Rollable
- ▶ Colour coded user replaceable straps

Conformance:
MDR 2017/745

SLIX100XL
£977.05
SLIX



Rollable Rescue Stretcher for Bariatrics

- ▶ Rollable
- ▶ Colour coded user replaceable straps

Conformance:
MDR 2017/745

SLIXHALV
£560.37
SLIX



Half Stretcher

- ▶ Complete with carry bag
- ▶ Arms out half stretcher with groin straps

Conformance:
MDR 2017/745

SLIXRR
£440.93
SLIX



Rapid Response Stretcher

Rollable stretcher, complete with carry bag.

Conformance:
MDR 2017/745

SLIX50COM
£1,222.52
SLIX



Arms Out Stretcher

Complete with carry bag.

Conformance:
MDR 2017/745

RS100
£719.01



Rollable Rescue Stretcher Kit

- ▶ Complete with carry bag
- ▶ Contains: lifting sling and connectors

Conformance:
Not PPE

ST/044
£990.57



Basket Stretcher

- ▶ Dimensions: 217 x 62 x 18.5 cm
- ▶ Weight: 13.5kg
- ▶ Load capacity: 278kg

Conformance:
Not PPE

SLIX100KIT

£714.97



Stretcher Kit

Contains:

- ▶ Rollable rescue stretcher (SLIX100)
- ▶ Lifting bridles (SLIXVHH)
- ▶ Rolltop carry bag for SLIX stretchers (SLIXBAG)

Conformance:

MDR 2017/745, EN358

SLIX100XLKIT

£1,141.48



Stretcher Kit for Bariatrics

Contains:

- ▶ Rollable rescue stretcher for bariatrics (SLIX100XL)
- ▶ Vertical positioning straps for SLIX100XL (SLIXVHXL)
- ▶ Horizontal positioning straps for SLIX100XL (SLIXHHXL)
- ▶ Rolltop carry bag for SLIX stretchers (SLIXBAG)

Conformance:

MDR 2017/745, EN358

SLIX®

SLIXBAG
£96.33
SLIX



Rolltop Carry Bag for SLIX Stretchers

Features:

- ▶ Shoulder straps
- ▶ Front pocket

Conformance:

Not PPE

SLIXRRBAG
£96.33
SLIX



Carry Bag for Rapid Response Stretcher

Features:

- ▶ Single shoulder straps
- ▶ Velcro closure straps

Conformance:

Not PPE

SLIXSS
£542.68
SLIX



Spinal Splint

- ▶ Complete with groin straps and head pocket for added support
- ▶ Attaches to SLIX100 and SLIX100XL stretchers
- ▶ Can be used with other stretchers

Conformance:
MDR 2017/745

EFS102
£264.34



Spinal Splint

In high-stress scenarios, colour coded velcro straps minimise confusion and maximise effectiveness.

Conformance:
Not PPE

EFS102/2
£322.49



Spinal Splint with Flotation Aid

A simple yet incredibly effective duo for clinical water rescues. The magic is in the removable flotation insert that attaches securely with velcro straps.

Conformance:
Not PPE

SLIXVHH
£95.21
SLIX



Vertical & Horizontal Positioning Strops

- ▶ For both vertical and horizontal positioning of SLIX100
- ▶ Colour coded eyes combined with maillons

Conformance:
EN358

SLIXVHXL
£95.21
SLIX



Vertical Positioning Strops

- ▶ For vertical positioning of SLIX100XL
- ▶ Colour coded eyes complete with maillons

Conformance:
EN358

SLIXHHXL
£95.21
SLIX



Horizontal Positioning Strops

- ▶ For horizontal positioning of SLIX100XL
- ▶ Colour coded eyes complete with maillons

Conformance:
EN358

ABSS—ABSS407
£151.07—£228.81



Adjustable Stretcher Positioning Strops

- ▶ For 1 pear shaped maillon (PPEPZ10) and 4 scaffold twistlocks (KH407) use code **ABSS — £151.07**
- ▶ For 5 scaffold twistlocks (KH407) use code **ABSS407 — £228.81**

Conformance:
EN358

SPALB
£153.69



Stretcher Positioning Strops

Complete with connectors

Conformance:
Not PPE

SLIXWS
£82.73
SLIX



Wire Stretcher Anchor Strops

- ▶ Colour coded for SLIX100
- ▶ Complete with connectors

Conformance:
EN795 Type B

RPX200
£1,555.19
RESQ



RESQ RED Pro X Original

For evacuation from high heights, lifting from deep shafts to advanced rescues, the height worker can feel confident that the equipment performance is verified.

Conformance:
EN341:2011 Class A, EN1496:2006

28350
£615.49
RESQ



RESQ Smartline X

Smartline X is the smallest and lightest personal evacuation device in the world with a maximum user weight of 140kg and a maximum descent distance of 100m.

Conformance:
Certified to EN341:2011/2D

ABRALF
£1,021.60



2 Way Locking Rescue System

- ▶ 15m working length at 5:1
- ▶ 350kg working load limit

Conformance:
Certified CE products used in this system

VWR1
£703.34



Vertical Work & Rescue System

- ▶ 15m working length

Conformance:
Certified CE products used in this system

VRS
£784.72



Vertical Rescue System

- ▶ Pre-rigged pulley system and reach pole for rescuing a person suspended in a harness
- ▶ 15m working length

Conformance:
Certified CE products used in this system

LADDERKIT
£590.22
STL TECH



Ladder Rescue Kit

The ladder kit provides a rescue function, allowing simple lowering of a casualty in case of emergency. Length of rope can be varied.

MEWP20
£523.35
STL TECH



MEWP Rescue Kit

- ▶ Easy to use device with anti-panic feature
- ▶ One handed rope adjustment to lengthen/shorten the rope as needed
- ▶ Short ladder to assist with getting out of the bucket

STL-PTR-NPG
£483.99
STL TECH



Pole Top Rescue Kit

- ▶ Easy to use device with anti-panic feature
- ▶ One handed rope adjustment to lengthen/shorten the rope as needed
- ▶ Protective sling to prevent damage from the pole

TOWERRESQKIT
£674.94
STL TECH



Tower Rescue Kit

- ▶ Large pear shaped karabiner for easy attachment to tower sections
- ▶ Auto retracting safety knife to prevent accidental cuts
- ▶ Easy to use device with anti-panic feature
- ▶ One handed rope adjustment to lengthen/shorten the rope as needed
- ▶ Device is certified for descent, work positioning and fall arrest



Rope Rigging

Rope Rigging tools are designed to ensure your safety and efficiency in the most challenging environments. From ropes that blend strength with flexibility to advanced pulleys and descenders, Abtech Safety has got your back, quite literally. Dive into the world of rope access equipment and discover how to remain securely connected to your tasks, ensuring safety at every step. Ready to gear up?

ABR--
£67.91—£123.52



Rope with Plastic Eyes

- ▶ Nylon rope with 16mm diameter
- ▶ Minimum breaking load: 6000kg
- ▶ **ABR5 — £67.91** (5m long)
- ▶ **ABR10 — £86.46** (10m long)
- ▶ **ABR15 — £105.01** (15m long)
- ▶ **ABR20 — £123.52** (20m long)

Conformance:
EN ISO 1140

LR/11
£2.64—£517.19



Static Rope

- ▶ Polyamide core and sheath rope with 11mm diameter
- ▶ Breaking strength: 34kN
- ▶ **LR/11/1 — £2.64** (price per metre)
- ▶ **LR/11/50 — £129.36** (50m long)
- ▶ **LR/11/100 — £258.72** (100m long)
- ▶ **LR/11/200 — £517.19** (200m long)

Conformance:
EN1891 Type A

F8
£15.01



Heat Shrunken Knotted Rope

- ▶ Heat Shrunken Figure 8
- ▶ Complete with K10SG connector
- ▶ Rope diameter: 11mm
- ▶ Breaking strength: 18kN

Conformance:
N/A

AB--RBAG
£61.96—£72.53



Rope Bag

- ▶ Roll top with stealth buckle
- ▶ Two shoulder straps
- ▶ Drainage hole in base
- ▶ **ABSRBAG — £61.96** (50m rope)
- ▶ **ABMRBAG — £64.61** (100m rope)
- ▶ **ABLRBAG — £68.56** (150m rope)
- ▶ **ABXLRBAG — £72.53** (200m rope)

CT101.3

£228.54



Beam Clamp

- ▶ Beam flange width: 105-310mm

Conformance:
EN795 Type B

GG201

£232.54



Girder Anchor

- ▶ Concrete anchor
- ▶ Required beam thickness: 330mm
- ▶ Required drilled hole of 20mm

Conformance:
EN795 Type B

RP300

£31.03



Small Rigging Plate

- ▶ High strength aluminium
- ▶ 20mm diameter attachment holes
- ▶ Breaking strength: 36kN

Conformance:
EN362

RP310

£43.54



Medium Rigging Plate

- ▶ High strength aluminium
- ▶ 20mm diameter attachment holes
- ▶ Breaking strength: 40kN

Conformance:
EN362

RP320

£90.06



Large Rigging Plate

- ▶ High strength aluminium
- ▶ 20mm diameter attachment holes
- ▶ Breaking strength: 45kN

Conformance:
EN362

RP012

£31.32



Single Pulley

- ▶ Max. 13mm rope
- ▶ Min. breaking strength: 36kN

Conformance:
EN12278

RP033

£62.43



Double Pulley

- ▶ Max. 13mm rope
- ▶ Min. breaking strength: 36kN

Conformance:
EN12278

RP030

£54.75



Small Double Pulley

- ▶ Max. 13mm rope
- ▶ Min. breaking strength: 36kN

Conformance:
EN12278

RP700

£167.11



Large Double Pulley

- ▶ Max. 13mm rope
- ▶ Min. breaking strength: 30kN

Conformance:
EN12278

RP034

£44.99



Double End Pulley

- ▶ Max. 13mm rope
- ▶ Min. breaking strength: 36kN

Conformance:
EN12278

RP705

£239.81



Capture Pulley

- ▶ One way locking progress capture pulley
- ▶ Suitable for 10-13mm diameter rope

Conformance:
EN567, EN12278

RP066

£117.32



Stainless Steel Pulley

- ▶ Max. 16mm rope
- ▶ Min. breaking strength: 50kN

Conformance:
EN12278

27001K
£6,147.42



EDER Power Climber

- ▶ Complete with 100m Ø11mm rope and rope bag
- ▶ Device bag available with code **211320** (£380.18)
- ▶ Additional 100m rope available with code **279006** (£485.33)

Conformance:
Not PPE

RP880—RP881
£225.27



D4 Descender

- ▶ Suitable for 10.5-11.5mm diameter rope
- ▶ Code **RP880** includes panic brake
Code **RP881** excludes panic brake

Conformance:
EN12841

RP220
£111.87



Hand Ascender

- ▶ Right handed (left handed version available upon request)
- ▶ Suitable for 9-13mm diameter rope

Conformance:
EN567, EN12841

RP209
£85.70



Mini Rope Grab

- ▶ Can be removed at any point on the rope
- ▶ Suitable for 10.5-13mm diameter rope

Conformance:
EN353-2

ABRP
£44.70



Manual Rope Grab

Suitable for 16mm diameter rope.

Conformance:
Not PPE

RP500
£98.78



Rocker

- ▶ Rocker work positioning device
- ▶ Suitable for 10.5-12.7mm diameter rope

Conformance:
EN353-2, EN358, EN12841-A

CRP70
£40.25



Canvas Rope Protector

Velcro edge to create a tube for rope to pass through

Conformance:
Not PPE

ER100-4
£127.65



Edge Roller

- ▶ Batch of 4 modules linked with maillons
- ▶ Can connect modules together

Conformance:
Not PPE

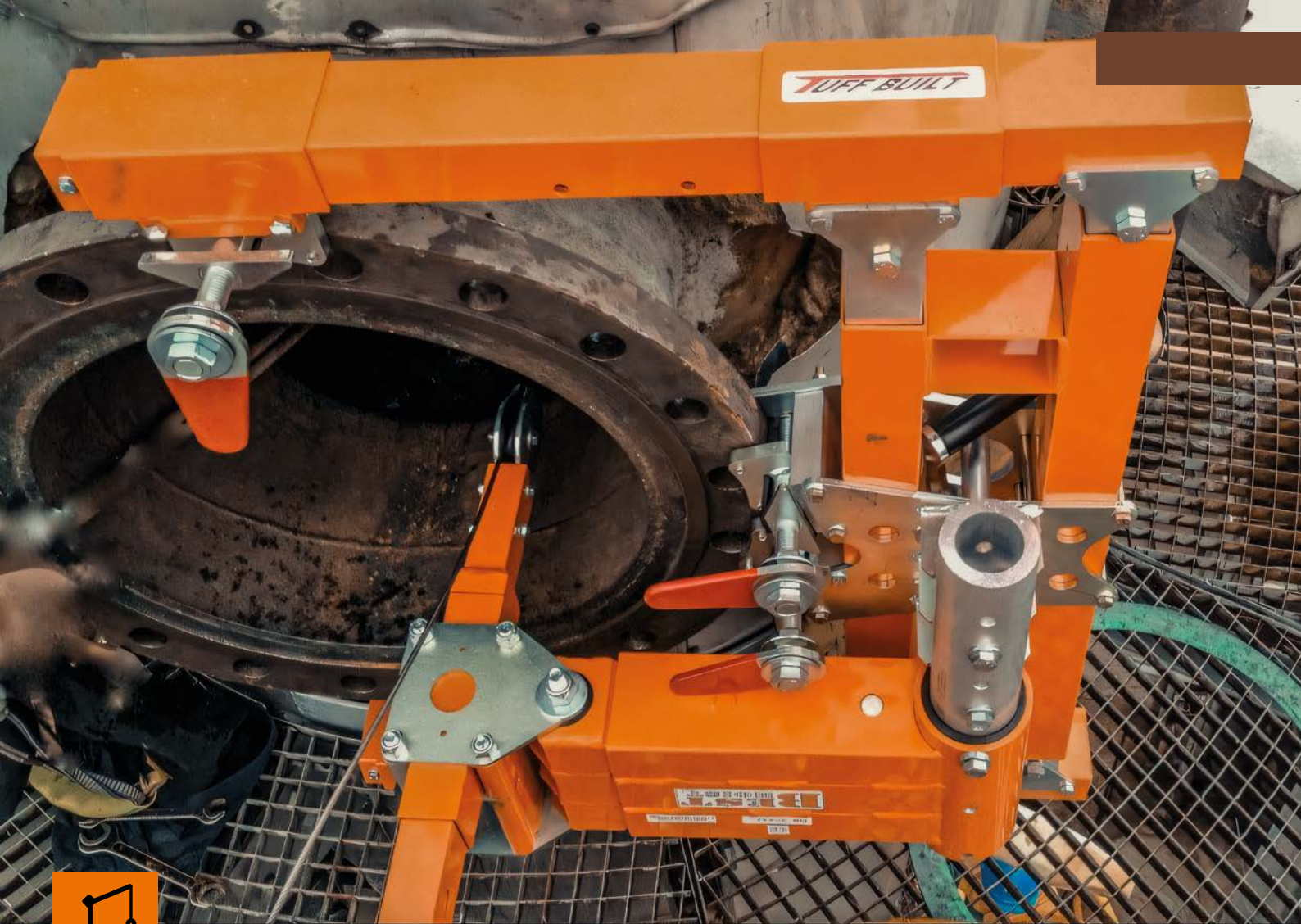
EPPLUS
£75.11



Ribbed Rope Protector

- ▶ Reinforced strips for extra rope protection
- ▶ Eyelets for anchoring

Conformance:
Not PPE



Davits

Whether you're focused on fall protection, work positioning, rescue operations, confined space entry, or even material handling, look no further. These davit systems can also be transformed into a rescue device when paired with a winch. Work positioning becomes effortless, and confined space entry and retrieval comply with international standards. For those situations where installing a personal fall arrest system isn't practical, this davit arm, with a compatible base and winch, safeguards climbers while ascending structures. Browse the Tuff Built davit systems, and make every ascent, every descent, and each task a secure success.

Extendable reach with
overload protection

Lightweight aluminium for
easy transportation

Brackets to mount winches

30073KIT

Counterweight Kit

- ▶ Includes 360kg in weights
- ▶ Conformance: EN795 Type B, EN360, EN1496

30104—30105

From £929.93



Upper Davit

Small upper davit

Product code **30104** — **£929.93**

- ▶ 28" (711mm) reach
- ▶ 54" (1,390mm) height

Large upper davit

Product code **30105** — **£1,239.92**

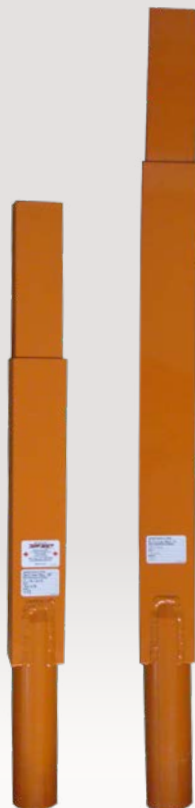
- ▶ 28" (711mm) reach
- ▶ 66" (1,676mm) height

Conformance:

EN795 Type B

30108—30109

From £749.11



Lower Davit

Small lower davit

Product code **30108** — **£749.11**

- ▶ 40" (1,016mm) height

Large lower davit

Product code **30109** — **£807.25**

- ▶ 52" (1,320mm) height

Conformance:

EN795 Type B

30031
£498.02
TUFF BUILT



Floor Mount

Bolt on base for tuff davits

Conformance:
EN795 Type B

30032
£454.96
TUFF BUILT



Wall Mount

Bolt on wall mount for tuff davits

Conformance:
EN795 Type B

30023
£464.90
TUFF BUILT



Flush Floor Mount

- ▶ Flush floor mount for tuff davits
- ▶ For casting into fresh concrete

30021
£464.90
TUFF BUILT



Flush Floor Mount

- ▶ Flush floor mount for tuff davits
- ▶ For existing concrete

Conformance:
EN795 Type B

30019
£45.26
TUFF BUILT



Sleeve Cap

Suitable for Tuff bases.

Conformance:
N/A

30073
£3,138.65
TUFF BUILT



Counterweight Base

Conformance:
EN795 Type B

WEIGHT30
£185.04
TUFF BUILT

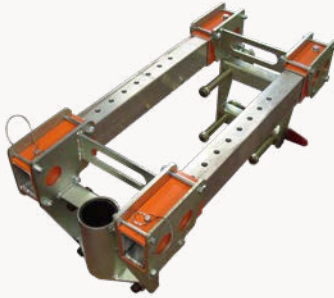


2x 15kg Weight

For use on counterweight bases.

Conformance:
Not PPE

30029
£2,234.41
TUFF BUILT



Adjustable Barrel Mount

- ▶ 2.25-25.00" (57-635mm)
- ▶ For mounting onto shoring and trench boxes

Conformance:
EN795 Type B

30036
£1,230.19
TUFF BUILT



Barrel Mount, 57mm

- ▶ 2.25" (57mm) diameter
- ▶ For mounting onto shoring and trench boxes

Conformance:
EN795 Type B

30161
£1,444.86
TUFF BUILT



Barrel Mount, 127mm

- ▶ 5" (127mm) diameter
- ▶ For mounting onto shoring and trench boxes

Conformance:
EN795 Type B

30166
£1,559.56
TUFF BUILT



Barrel Mount, 181mm

- ▶ 7" (181mm) diameter
- ▶ For mounting onto shoring and trench boxes

Conformance:
EN795 Type B

30073KIT
£10,759.48
TUFF BUILT



Counterweight Kit

Contains:

- ▶ Counterweight base (30073)
- ▶ Large upper davit (30105)
- ▶ Large lower davit (30109)
- ▶ 30m personnel winch (60005)
- ▶ 15m Fall Arrest Winch (AB15RT)
- ▶ 2 davit brackets (60209)
- ▶ AB15RT to Davit bracket (60176/2)
- ▶ 360kg in weights (12x WEIGHT30)

NB: To request a 30m fall arrest winch (AB30RT) instead, use product code **30073KIT-30**

Conformance:

EN795 Type B, EN360, EN1496

30029KIT
£7,666.00
TUFF BUILT



Adjustable Barrel Mount Kit

Contains:

- ▶ Adjustable barrel mount (30029)
- ▶ Large upper davit (30105)
- ▶ Large lower davit (30109)
- ▶ 30m personnel winch (60005)
- ▶ 15m fall arrest winch (AB15RT)
- ▶ 2 davit brackets (60209)
- ▶ AB15RT to davit bracket (60176/2)

Conformance:

EN795 Type B, EN360, EN1496

30070KIT
£6,238.60
TUFF BUILT



4-Piece Base Kit

For access into confined spaces.

Contains:

- ▶ 4-piece base (30070)
- ▶ Large upper davit (30105)
- ▶ Large lower davit (30109)
- ▶ 30m personnel winch (60005)
- ▶ Davit bracket (60209)

Conformance:

EN795 Type B, EN1496

30036KIT
£6,671.81
TUFF BUILT



Barrel Mount Kit, 57mm

Contains:

- ▶ Barrel mount (30036)
- ▶ Large upper davit (30105)
- ▶ Large lower davit (30109)
- ▶ 30m personnel winch (60005)
- ▶ 15m fall arrest winch (AB15RT)
- ▶ 2 davit brackets (60209)
- ▶ AB15RT to davit bracket (60176/2)

Conformance:

EN795 Type B, EN360, EN1496

30161KIT
£6,884.34
TUFF BUILT



Barrel Mount Kit, 127mm

Contains:

- ▶ Barrel mount (30161)
- ▶ Large upper davit (30105)
- ▶ Large lower davit (30109)
- ▶ 30m personnel winch (60005)
- ▶ 15m fall arrest winch (AB15RT)
- ▶ 2 davit brackets (60209)
- ▶ AB15RT to davit bracket (60176/2)

Conformance:

EN795 Type B, EN360, EN1496

30166KIT
£6,997.89
TUFF BUILT



Barrel Mount Kit, 181mm

Contains:

- ▶ Barrel mount (30166)
- ▶ Large upper davit (30105)
- ▶ Large lower davit (30109)
- ▶ 30m personnel winch (60005)
- ▶ 15m fall arrest winch (AB15RT)
- ▶ 2 davit brackets (60209)
- ▶ AB15RT to davit bracket (60176/2)

Conformance:

EN795 Type B, EN360, EN1496

30040KIT
£5,397.99
<i>TOFF BUILT</i>



Pole Hoist Kit

Contains:

- ▶ Pole hoist (30040)
- ▶ 30m personnel winch (60005)

Conformance:

EN795 Type B, EN1496

30093KIT
£7,230.02
<i>TOFF BUILT</i>



Vehicle Hitch Mount Kit

Contains:

- ▶ Vehicle hitch mount base (30093)
- ▶ Large upper davit (30105)
- ▶ Large lower davit (30109)
- ▶ 30m personnel winch (60005)
- ▶ 15m fall arrest winch (AB15RT)
- ▶ 2 davit brackets (60209)
- ▶ AB15RT to davit bracket (60176/2)

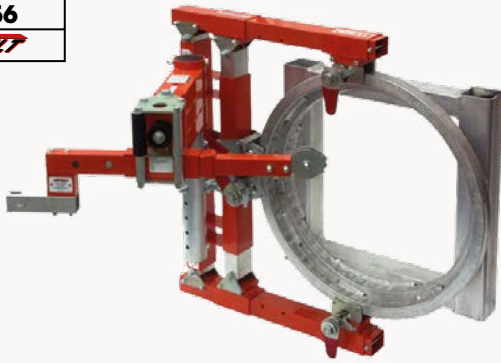
Conformance:

EN795 Type B, EN1496

30321/235

£7,188.56

TUFF BUILT



Horizontal Entry: Clamp and Arm

For clamping onto tank collars and flanges.

Conformance:
EN795 Type B

30234/235

£3,863.04

TUFF BUILT



Horizontal Entry: Post and Arm

For entry and egress horizontally. Requires a floor mount.

Conformance:
EN795 Type B

50048

£3,111.89

TUFF BUILT



Analog Davit

For applications where an extended height and reach are required.

2.8m height with 1.9m reach.

Conformance:
EN795 Type B

30557

£2,771.22

TUFF BUILT



Analog Davit

For applications where an extended height and reach are required.

2.1m height with 1.2m reach.

Conformance:
EN795 Type B

60209

£205.19



Davit Bracket

Attaching a personnel winch to a davit system made simple.

Conformance:
EN795 Type B

60176/2

£158.25



AB15RT to Davit Bracket

Must be used in conjunction with davit bracket (product code **60209**).

Conformance:
EN795

T05T-30D

£159.32



AB30RT to Davit Bracket

Perfectly secures to any Abtech Safety davit system.

Conformance:
EN795 Type B

60294

£186.18



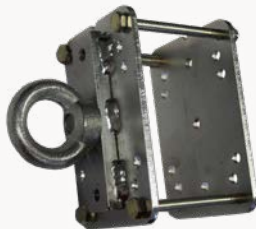
Analog Davit Bracket

Specifically designed for personnel winches.

Conformance:
EN795

60141/EYE

£123.30



Davit Anchor Eye

Add an anchor point to your davit system, right where you need it.

Conformance:
N/A

ABDR-KIT

£100.97



Winch Davit Reeve Kit

The components are packaged to work seamlessly with your davit bracket (product code **60209**).

Conformance:
N/A



Connectors

Explore Abtech Safety's comprehensive range of connectors, including maillons, twistlocks, screwgates, and hooks. Designed and tested to meet the highest safety standards, these connectors offer reliability and security in diverse applications. Whether you're in an industrial setting or tower climbing, our connectors ensure your safety by preventing accidental openings, withstanding high loads, and resisting corrosion. Trust Abtech Safety for precision-engineered connectors that provide flexibility without compromising on safety.

DZ10
£8.67



Delta Maillon

- ▶ Minimum breaking strength: 45kN
- ▶ Maximum gate opening: 12mm

Conformance:
EN362

GOZ07
£5.00



Oval Maillon

- ▶ Minimum breaking strength: 25kN
- ▶ Maximum gate opening: 16mm

Conformance:
EN362

PPEPZ10
£12.62



Pear Shaped Maillon

- ▶ Minimum breaking strength: 36kN
- ▶ Maximum gate opening: 20.5mm

Conformance:
EN362

PPESCZ10
£12.66



Semi-Circular Maillon

- ▶ Minimum breaking strength: 45kN
- ▶ Maximum gate opening: 10mm

Conformance:
EN362

S2046
£12.12



Small Snap Hook

- ▶ Minimum breaking strength: 25kN
- ▶ Maximum gate opening: 20mm

Conformance:
EN362

SSE/SSH
£25.84



Snap Scaffold Hook

- ▶ Minimum breaking strength: 30kN
- ▶ Maximum gate opening: 65mm

Conformance:
EN362

K40SGP
£16.49



Klettersteig Screwgate

- ▶ Minimum breaking strength: 50kN
- ▶ Maximum gate opening: 26mm

Conformance:
EN362

K10DA
£12.53



Oval Twistlock

- ▶ Minimum breaking strength: 25kN
- ▶ Maximum gate opening: 18mm

Conformance:
EN362

K10SG
£6.54



Oval Screwgate

- ▶ Minimum breaking strength: 25kN
- ▶ Maximum gate opening: 18mm

Conformance:
EN362

C853
£30.82



Boa Twistlock Karabiner

- ▶ Minimum breaking strength: 40kN
- ▶ Maximum gate opening: 24mm

Conformance:
EN362

C842
£24.96



Rescue Screwgate

- ▶ Minimum breaking strength: 45kN
- ▶ Maximum gate opening: 25mm

Conformance:
EN362

KH407
£29.98



Scaffold Twistlock

- ▶ Minimum breaking strength: 35kN
- ▶ Maximum gate opening: 53mm

Conformance:
EN362



Access Solutions

This range from Abtech Safety has been meticulously designed to provide reliable Access Solutions. Whether you're scaling heights, accessing confined spaces, or navigating complex structures, Abtech Safety's Access Solutions are trusted to deliver safety and productivity, ensuring you can work confidently in any elevated or challenging environment.

TUFFEXO
P.O.A.
TUFF BUILT



Exosphere Anchor

- ▶ Mobile davit with trailer
- ▶ This system is available with a range of customisable options
- ▶ Please contact us for options and prices

Conformance:
EN795 Type B

TUFFEXO4X4
P.O.A.
TUFF BUILT



Exosphere Anchor 4x4

- ▶ Mobile davit with remote control 4x4 base
- ▶ This system is available with a variety of anchor options
- ▶ Please contact us for options and prices

Conformance:
EN795 Type B

FLEXIS
£116.25



Single Flexi Ladder

- ▶ Comes in 3m lengths
- ▶ Can be connected together

Conformance:
Not PPE

FLEXID
£187.79



Double Flexi Ladder

- ▶ Comes in 3 metre lengths
- ▶ Can be connected together

Conformance:
Not PPE

FLEXIH
£152.24



Double Flexi Ladder Hanger

Comes complete with connectors

Conformance:
Not PPE

TUFFSTEP
P.O.A.
TUFF BUILT



Tuff Steps

Narrow and wide step sections that can be joined together to create walkway on flat or inclined surfaces. Handrails can be added to one or both sides.

Conformance:
N/A



Bags & Helmets

Abtech Safety offers a range of storage solutions. These purpose-built bags and boxes are designed to meet the demanding needs of professionals in fields such as Utilities, Construction and Rescue. With Abtech Safety, you can trust in durable and reliable storage solutions to keep your equipment, tools, and parts secure and accessible, on the job site or in the field.

ABBAG
£14.87



Kit Bag

- ▶ Kit bag for holding harness and lanyard
- ▶ Features a zip compartment and padded shoulder straps

LOPSBAG
£478.03
STL TECH



Line Ops Rescue Bag

A set of 9 removable pouches of different sizes carry your kit, each pouch has a pair of quick-release belt loops, clear front, drain holes and reflective tape. A karabiner storage 'daisy chain' is also included on a fast-release buckle. Produced from tough water-resistant PVC with reflective tape on both the outer bag and all inner pouches. Reflective RESCUE panel on front.

STL9318
£45.85
STL TECH



Bolt Bag

- ▶ Large vinyl bolt bag
- ▶ Fits all utility harnesses

RRST35
£58.00
STL TECH



Mesh Bolt Bag

STL full mesh bolt bag (black and red) with straps.

STL9417—STL9418
£26.09—£39.83
STL TECH



Canvas Tool Bag

STL canvas tool bags provide a practical solution when working. They can be attached to any utility harness using strong clip buckles to secure them.

- ▶ Product code **STL9417** — **£26.09** (Size medium)
- ▶ Product code **STL9418** — **£39.83** (Size large)

012263105
£80.07
CRESTO



Crown Electro Helmet, Hi-Viz

- ▶ Electrically insulated
- ▶ Fits XS-XXL (53-63cm)
- ▶ Quick mounts for accessories

Conformance:
EN 397, EN 50365



TERMS & CONDITIONS

The customer's attention is drawn in particular to the provisions of clause 8.

1. INTERPRETATION

1.1 Definitions:

Business Day: a day other than a Saturday, Sunday or public holiday in England, when banks in London are open for business.

Business Hours: the period from 9.00 am to 5.00 pm on any Business Day.

Conditions: the terms and conditions set out in this document as amended from time to time in accordance with clause 11.3.

Contract: the contract between Abtech Safety Ltd and the Customer for the sale and purchase of the Goods in accordance with these Conditions.

Customer: the person or firm who purchases the Goods from Abtech Safety Ltd.

Delivery Location: has the meaning given in clause 4.2.

Force Majeure Event: an event, circumstance or cause beyond a party's reasonable control.

Goods: the goods (or any part of them) set out in the Order.

Order: the Customer's order for the Goods, as set out in the Customer's purchase order form, the Customer's written acceptance of the Supplier's quotation, or overleaf, as the case may be.

Specification: any specification for the Goods, including any related plans and drawings, that is agreed by the Customer and Abtech Safety Ltd.

Supplier: Abtech Safety Ltd (registered in England and Wales with company number 02656103).

1.2 Interpretation

(a) A person includes a natural person, corporate or unincorporated body (whether or not having separate legal personality).

(b) A reference to a party includes its successors and permitted assigns.

(c) A reference to legislation or a legislative provision is a reference to it as amended or re-enacted. A reference to legislation or a legislative provision includes all subordinate legislation made under that legislation or legislative provision.

(d) Any words following the terms including, include, in particular, for example or any similar expression shall be interpreted as illustrative and shall not limit the sense of the words preceding those terms.

(e) A reference to writing or written excludes fax and email.

2. BASIS OF CONTRACT

2.1 These Conditions apply to the Contract to the exclusion of any other terms that the Customer seeks to impose or incorporate, or which are implied by law, trade custom, practice or course of dealing.

2.2 The Order constitutes an offer by the Customer to purchase the Goods in accordance with these Conditions. The Customer is responsible for ensuring that the terms of the Order and any applicable Specification submitted by the Customer are complete and accurate.

2.3 The Order shall only be deemed to be accepted when Abtech Safety Ltd issues a written acceptance of the Order, at which point the Contract shall come into existence.

2.4 The Customer waives any right it might otherwise have to rely on any term endorsed upon, delivered with or contained in any documents of the Customer that is inconsistent with these Conditions.

2.5 Any samples, drawings, descriptive matter or advertising produced by Abtech Safety Ltd and any descriptions or illustrations contained in Abtech Safety Ltd's catalogues or brochures are produced for the sole purpose of giving an approximate idea of the Goods referred to in them. They shall not form part of the Contract nor have any contractual force.

2.6 A quotation for the Goods given by Abtech Safety Ltd shall not constitute an offer. A quotation shall only be valid for a period of 30 calendar days from its date of issue.

3. GOODS

3.1 The Goods are described in the Specification.

3.2 The Customer shall indemnify Abtech Safety Ltd against all liabilities, costs, expenses, damages and losses (including any direct, indirect or consequential losses, loss of profit, loss of reputation and all interest, penalties and legal and other reasonable professional costs and expenses) suffered or incurred by Abtech Safety Ltd in connection with any claim made against Abtech Safety Ltd for actual or alleged infringement of a third party's intellectual property rights arising out of or in connection with Abtech Safety Ltd's use of the Specification. This clause 3.2 shall survive termination of the Contract.

3.3 Abtech Safety Ltd reserves the right to amend the Specification if required by any applicable statutory or regulatory requirement, and Abtech Safety Ltd shall notify the Customer in any such event.

4. DELIVERY

4.1 Abtech Safety Ltd shall ensure that each delivery of the Goods is accompanied by a delivery note that shows the date of the Order, the contract number, the type and quantity of the Goods

4.2 Abtech Safety Ltd shall deliver the Goods to the location set out in the Order or such other location as the parties may agree (Delivery Location) at any time after Abtech Safety Ltd notifies the Customer that the Goods are ready.

4.3 Delivery is completed on the completion of unloading of the Goods at the Delivery Location.

4.4 Any dates quoted for delivery are approximate only, and the time of delivery is not of the essence. Abtech Safety Ltd shall not be liable for any delay in delivery of the Goods that is caused by a Force Majeure Event or the Customer's failure to provide Abtech Safety Ltd with adequate delivery instructions or any other instructions that are relevant to the supply of the Goods.

4.5 If Abtech Safety Ltd fails to deliver the Goods, its liability shall be limited to the costs and expenses incurred by the Customer in obtaining replacement goods of similar description and quality in the cheapest market available, less the price of the Goods. Abtech Safety Ltd shall have no liability for any failure to deliver the Goods to the extent that such failure is caused by a Force Majeure Event or the Customer's failure to provide Abtech Safety Ltd with adequate delivery instructions or any other instructions that are relevant to the supply of the Goods.

4.6 If the Customer fails to accept delivery of the Goods within 10 Business Days of Abtech Safety Ltd notifying the Customer that the Goods are ready, then, except where such failure or delay is caused by a Force Majeure Event or Abtech Safety Ltd's failure to comply with its obligations under the Contract in respect of the Goods:

(a) delivery of the Goods shall be deemed to have been completed at 9:00 am on the third Business Day after the day on which Abtech Safety Ltd notified the Customer that the Goods were ready; and

(b) Abtech Safety Ltd shall store the Goods until actual delivery takes place, and charge the Customer for all related costs and expenses (including insurance).

4.7 If 30 Business Days after the day on which Abtech Safety Ltd notified the Customer that the Goods were ready for delivery the Customer has not taken actual delivery of them, Abtech Safety Ltd may resell or otherwise dispose of part or all of the Goods and, after deducting reasonable storage and selling costs, charge the Customer for any shortfall below the price of the Goods.

4.8 Abtech Safety Ltd may deliver the Goods by instalments, which shall be invoiced and paid for separately. Each instalment shall constitute a separate contract. Any delay in delivery or defect in an instalment shall not entitle the Customer to cancel any other instalment.

5. QUALITY

- 5.1 Abtech Safety Ltd warrants that on delivery the Goods shall:
- (a) conform with the Specification; and
 - (b) be free from material defects in design, material and workmanship.
- 5.2 Subject to clause 5.3, if:
- (a) the Customer gives notice in writing to Abtech Safety Ltd within a reasonable time of discovery that some or all of the Goods do not comply with the warranty set out in clause 5.1;
 - (b) Abtech Safety Ltd is given a reasonable opportunity of examining such Goods; and
 - (c) the Customer (if asked to do so by Abtech Safety Ltd) returns such Goods to Abtech Safety Ltd's place of business at the Customer's cost, Abtech Safety Ltd shall, at its option, repair or replace the defective Goods, or refund the price of the defective Goods in full.
- 5.3 Abtech Safety Ltd shall not be liable for the Goods' failure to comply with the warranty set out in clause 5.1 if:
- (a) the Customer makes any further use of such Goods after giving notice in accordance with clause 5.2;
 - (b) the defect arises because the Customer failed to follow Abtech Safety Ltd's oral or written instructions as to the storage, commissioning, installation, use and maintenance of the Goods or (if there are none) good trade practice regarding the same;
 - (c) the defect arises as a result of Abtech Safety Ltd following any drawing, design or specification supplied by the Customer;
 - (d) the Customer alters or repairs such Goods without the written consent of Abtech Safety Ltd;
 - (e) the defect arises as a result of fair wear and tear, wilful damage, negligence, or abnormal storage or working conditions; or
 - (f) the Goods differ from the Specification as a result of changes made to ensure they comply with applicable statutory or regulatory requirements.
- 5.4 Except as provided in this clause 5, Abtech Safety Ltd shall have no liability to the Customer in respect of the Goods' failure to comply with the warranty set out in clause 5.1.
- 5.5 The terms implied by sections 13 to 15 of the Sale of Goods Act 1979 are, to the fullest extent permitted by law, excluded from the Contract.
- 5.6 These Conditions shall apply to any repaired or replacement Goods supplied by Abtech Safety Ltd.

6. TITLE AND RISK

- 6.1 The risk in the Goods shall pass to the Customer on completion of delivery.
- 6.2 Title to the Goods shall not pass to the Customer until Abtech Safety Ltd receives payment in full (in cash or cleared funds) for the Goods and any other goods that Abtech Safety Ltd has supplied to the Customer, in which case title to the Goods shall pass at the time of payment of all such sums
- 6.3 Until title to the Goods has passed to the Customer, the Customer shall:
- (a) store the Goods separately from all other goods held by the Customer so that they remain readily identifiable as Abtech Safety Ltd's property;
 - (b) not remove, deface or obscure any identifying mark or packaging on or relating to the Goods;
 - (c) maintain the Goods in satisfactory condition and keep them insured against all risks for their full price from the date of delivery;
 - (d) notify Abtech Safety Ltd immediately if it becomes subject to any of the events listed in clause 9.1(b) to clause 9.1(d).
- 6.4 At any time before title to the Goods passes to the Customer, Abtech Safety Ltd may require the Customer to deliver up all Goods in its possession that have not been resold, or irrevocably incorporated into another product and if the Customer fails to do so promptly, enter any premises of the Customer or of any third party where the Goods are stored in order to recover them.

7. PRICE AND PAYMENT

- 7.1 The price of the Goods shall be the price set out in the Order.
- 7.2 Abtech Safety Ltd may, by giving notice to the Customer at any time before delivery, increase the price of the Goods to reflect any increase in the cost of the Goods that is due to:
- (a) any factor beyond Abtech Safety Ltd's control (including foreign exchange fluctuations, increases in taxes and duties, and increases in labour, materials and other manufacturing costs);
 - (b) any request by the Customer to change the delivery date(s), quantities or types of Goods ordered, or the Specification; or
 - (c) any delay caused by any instructions of the Customer or failure of the Customer to give Abtech Safety Ltd adequate or accurate information or instructions.
- 7.3 The price of the Goods:
- (a) excludes amounts in respect of value added tax (VAT), which the Customer shall additionally be liable to pay to Abtech Safety Ltd at the prevailing rate, subject to the receipt of a valid VAT invoice; and
 - (b) excludes the costs and charges of packaging, insurance and transport of the Goods, which shall be invoiced to the Customer
- 7.4 Abtech Safety Ltd may invoice the Customer for the Goods before or at any time after the completion of delivery.
- 7.5 The Customer shall pay each invoice submitted by Abtech Safety Ltd:
- (a) within 30 days of the date of the invoice; and
 - (b) in full and in cleared funds to a bank account nominated in writing by Abtech Safety Ltd, and
 - (c) time for payment shall be of the essence of the Contract.
- 7.6 If the Customer fails to make a payment due to Abtech Safety Ltd under the Contract by the due date, then, without limiting Abtech Safety Ltd's remedies under clause 9, the Customer shall pay interest on the overdue sum from the due date until payment of the overdue sum, whether before or after judgment. Interest under this clause 7.6 will accrue each day at 4% a year above the Bank of England's base rate from time to time, but at 4% a year for any period when that base rate is below 0%.
- 7.7 All amounts due under the Contract shall be paid in full without any set-off, counterclaim, deduction or withholding (other than any deduction or withholding of tax as required by law).

8. LIMITATION OF LIABILITY

- 8.1 Abtech Safety Ltd has been unable to obtain insurance in respect of certain types of loss at a commercially viable price.
- 8.2 The restrictions on liability in this clause 8 apply to every liability arising under or in connection with the Contract including liability in contract, tort (including negligence), misrepresentation, restitution or otherwise.
- 8.3 Nothing in the Contract limits any liability which cannot legally be limited, including liability for:
- (a) death or personal injury caused by its negligence, or the negligence of its employees, agents or subcontractors (as applicable);
 - (b) fraud or fraudulent misrepresentation;
 - (c) breach of the terms implied by section 12 of the Sale of Goods Act 1979; or
 - (d) defective products under the Consumer Protection Act 1987.
- 8.4 Subject to clause 8.3, Abtech Safety Ltd's total liability to the Customer shall not exceed £1,000.
- 8.5 Subject to clause 8.3, the following types of loss are wholly excluded:
- (a) loss of profits;
 - (b) loss of sales or business;

- (c) loss of agreements or contracts;
- (d) loss of anticipated savings;
- (e) loss of use or corruption of software, data or information;
- (f) loss of or damage to goodwill; and
- (g) indirect or consequential loss.

8.6 This clause 8 shall survive termination of the Contract.

9. TERMINATION

- 9.1** Without limiting its other rights or remedies, Abtech Safety Ltd may terminate this Contract with immediate effect by giving written notice to the Customer if:
- (a) the Customer commits a material breach of any term of the Contract and (if such a breach is remediable) fails to remedy that breach within 10 days of that party being notified in writing to do so;
 - (b) the Customer takes any step or action in connection with its entering administration, provisional liquidation or any composition or arrangement with its creditors (other than in relation to a solvent restructuring), obtaining a moratorium, being wound up (whether voluntarily or by order of the court, unless for the purpose of a solvent restructuring), having a receiver appointed to any of its assets or ceasing to carry on business;
 - (c) the Customer suspends, threatens to suspend, ceases or threatens to cease to carry on all or a substantial part of its business; or
 - (d) the Customer's financial position deteriorates so far as to reasonably justify the opinion that its ability to give effect to the terms of the Contract is in jeopardy.
- 9.2** Without limiting its other rights or remedies, Abtech Safety Ltd may suspend provision of the Goods under the Contract or any other contract between the Customer and Abtech Safety Ltd if the Customer becomes subject to any of the events listed in clause 9.1(b) to clause 9.1(d), or Abtech Safety Ltd reasonably believes that the Customer is about to become subject to any of them, or if the Customer fails to pay any amount due under this Contract on the due date for payment.
- 9.3** Without limiting its other rights or remedies, Abtech Safety Ltd may terminate the Contract with immediate effect by giving written notice to the Customer if the Customer fails to pay any amount due under the Contract on the due date for payment.
- 9.4** On termination of the Contract for any reason the Customer shall immediately pay to Abtech Safety Ltd all of Abtech Safety Ltd's outstanding unpaid invoices and interest and, in respect of Goods supplied but for which no invoice has been submitted, Abtech Safety Ltd shall submit an invoice, which shall be payable by the Customer immediately on receipt.
- 9.5** Termination or expiry of the Contract, however arising, shall not affect any of the parties' rights and remedies that have accrued as at termination or expiry, including the right to claim damages in respect of any breach of the Contract which existed at or before the date of termination or expiry.
- 9.6** Any provision of the Contract that expressly or by implication is intended to come into or continue in force on or after termination or expiry of the Contract shall remain in full force and effect.

10. FORCE MAJEURE

Neither party shall be in breach of the Contract or otherwise liable for any failure or delay in the performance of its obligations if such delay or failure results from a Force Majeure Event. The time for performance of such obligations shall be extended accordingly. If the period of delay or non-performance continues for two months, the party not affected may terminate the Contract by giving 30 days' written notice to the affected party.

11. GENERAL

- 11.1** Assignment and other dealings.
- (a) Abtech Safety Ltd may at any time assign, transfer, mortgage, charge, subcontract, delegate, declare a trust over or deal in any other manner with all or any of its rights or obligations under the Contract.
 - (b) The Customer may not assign, transfer, mortgage, charge, subcontract, delegate, declare a trust over or deal in any other manner with any or all of its rights or obligations under the Contract without the prior written consent of Abtech Safety Ltd.
- 11.2** Entire agreement.
- (a) The Contract constitutes the entire agreement between the parties.
 - (b) Each party acknowledges that in entering into the Contract it does not rely on any statement, representation, assurance or warranty (whether made innocently or negligently) that is not set out in the Contract. Each party agrees that it shall have no claim for innocent or negligent misrepresentation or negligent misstatement based on any statement in the Contract.
- 11.3** Variation.
- No variation of this Contract shall be effective unless it is in writing and signed by the parties (or their authorised representatives).
- 11.4** Waiver.
- (a) A waiver of any right or remedy is only effective if given in writing and shall not be deemed a waiver of any subsequent right or remedy.
 - (b) A delay or failure to exercise, or the single or partial exercise of, any right or remedy shall not waive that or any other right or remedy, nor shall it prevent or restrict the further exercise of that or any other right or remedy.
- 11.5** Severance.
- If any provision or part-provision of the Contract is or becomes invalid, illegal or unenforceable, it shall be deemed deleted, but that shall not affect the validity and enforceability of the rest of the Contract. If any provision of the Contract is deemed deleted under this clause 11.5 the parties shall negotiate in good faith to agree a replacement provision that, to the greatest extent possible, achieves the intended commercial result of the original provision.
- 11.6** Notices.
- (a) Any notice or other communication given to a party under or in connection with the Contract shall be in writing and shall be delivered by hand or by pre-paid first-class post or other next working day delivery service at its registered office (if a company) or its principal place of business (in any other case).
 - (b) Any notice shall be deemed to have been received
 - (i) if delivered by hand, at the time the notice is left at the proper address; and
 - (ii) if sent by pre-paid first-class post or other next working day delivery service, at 9:00 am on the two Business Day after posting.
 - (c) This clause does not apply to the service of any proceedings or other documents in any legal action or, where applicable, any arbitration or other method of dispute resolution.
- 11.7** Third party rights.
- The Contract does not give rise to any rights under the Contracts (Rights of Third Parties) Act 1999 to enforce any term of the Contract.
- 11.8** Governing law.
- The Contract, and any dispute or claim (including non-contractual disputes or claims) arising out of or in connection with it or its subject matter or formation, shall be governed by and construed in accordance with the law of England and Wales.
- 11.9** Jurisdiction. Each party irrevocably agrees that the courts of England and Wales shall have exclusive jurisdiction to settle any dispute or claim (including non-contractual disputes or claims) arising out of or in connection with the Contract or its subject matter or formation.

PRODUCT INDEX

Code	Product	Page	Code	Product	Page
012263105	Crown Electro Helmet Hi-Viz	69	AB100HV	Hi Vis Anchor Sling	23
138	Sirocco Harness	15	AB10ADJ	Access Platform Kit	16
1118	Fusion Active Harness	14	AB10KIT	Working at Height Kit	16
1136	Energy Pro Harness	14	AB120R	Round Sling	23
1137	Fusion Active Wind Harness	15	AB150HV	Hi Vis Anchor Sling	23
1602	Fusion Pro Twin-Flex	20	AB15RT	TORQ Fall Arrest Winch	29/30
2342	Simo S Work Positioning Lanyard	22	AB15T	TORQ Fall Arrest Device	26
18561	27m Personnel Winch	29	AB2.4T	TORQ Micro Webbing Fall Arrest Device	26
28350	RESQ Smartline X	42	AB2.4TTW	TORQ Micro Webbing Fall Arrest Device	26
30019	Sleeve Cap	54	AB20	Two Point Harness	13
30021	Flush Floor Mount	54	AB200HV	Hi Vis Anchor Sling	23
30023	Flush Floor Mount	54	AB200R	Round Sling	23
30029	Adjustable Barrel Mount	56	AB20LTW	Working at Height Kit	16
30031	Floor Mount	54	AB20SL	Two Point Harness	13
30032	Wall Mount	54	AB20SLKIT	Working at Height Kit	16
30036	Barrel Mount, 57mm	56	AB240R	Round Sling	23
30073	Counterweight Base	55	AB30RT	TORQ Max Fall Arrest Recovery Winch	29
30104	Small Upper Davit	53	AB30T	TORQ Max Retractable Fall Arrester	26
30105	Large Upper Davit	53	AB40R	Round Sling	23
30108	Small Lower Davit	53	ABBAG	Kit Bag	69
30109	Large Lower Davit	53	ABBC	Bosuns Chair	18
30161	Barrel Mount, 127mm	56	ABBS	Bosuns Seat	18
30166	Barrel Mount, 181mm	56	ABDR-KIT	Winch Davit Reeve Kit	61
30557	Analog Davit	60	ABELITE	Access Elite Harness	14
50048	Analog Davit	60	ABJ-O	Hi-Vis Jacket	18
60005	30m Personnel Winch	29	ABJ-Y	Hi-Vis Jacket	18
60011	45m Personnel Winch	29	ABL2.0	Fall Arrest Lanyard	20
60209	Davit Bracket	61	ABL2.0SH	Fall Arrest Lanyard with Snap Hook	20
60257	30m Materials Winch	29	ABLRBAG	Rope Bag	45
60294	Analog Davit Bracket	61	ABLRST	Combi Lanyard	21
264680117	Tool Tether Set with Ropes	24	ABLSS	Leg Suspension Strop	18
264901309	Wrist Snap Swivel Snap Hook	24	ABLTW1.5	Twin Fall Arrest Lanyard	20
276860103	Lanyard Elastic	24	ABLTW1.5SH	Twin Fall Arrest Lanyard with Snap Hook	20
276870102	Lanyard Elastic	24	ABMRBAG	Rope Bag	45
292650108	Tool Holder with D-Ring	24	ABNAP	Rescue Nappy	18
301153607	Spiral Wire Three Set Kit	24	ABPRO	Access Pro Harness	14
1136WIND	Energy Pro Wind Harness	14	ABR10	Rope with Plastic Eyes	45
120POLECAT	Polecat Pole Choker	22	ABR15	Rope with Plastic Eyes	45
27001K	EDER Power Climber	49	ABR20	Rope with Plastic Eyes	45
30029KIT	Adjustable Barrel Mount Kit	57	ABR5	Rope with Plastic Eyes	45
30036KIT	Barrel Mount Kit, 57mm	58	ABRALF	2 Way Locking Rescue System	42
30040KIT	Pole Hoist Kit	59	ABRAT	Rope Rat	22
30070KIT	4-Piece Base Kit	57	ABRES	Rescue Harness	13
30073KIT	Counterweight Kit	57	ABRESHV	Hi Vis Rescue Harness	13
30093KIT	Vehicle Hitch Mount Kit	59	ABRL03W	TORQ Lite Fall Arrest Device	26
30161KIT	Barrel Mount Kit, 127mm	58	ABRL06	TORQ Lite Fall Arrest Device	26
30166KIT	Barrel Mount Kit, 181mm	58	ABRL06W	TORQ Lite Fall Arrest Device	26
30234/235	Horizontal Entry: Post and Arm	60	ABRL10	TORQ Lite Fall Arrest Device	26
30321/235	Horizontal Entry: Clamp and Arm	60	ABRL20	TORQ Lite Fall Arrest Device	26
60141/EYE	Davit Anchor Eye	61	ABRP	Manual Rope Grab	49
60176/2	AB15RT to Davit Bracket	61	ABRST	Restraint Lanyard	21
90115-BSH	Chokestrap Pole Choker	22	ABRSTADJ	Restraint Lanyard	21
90115-SP	Chokestrap Pole Choker	22	ABSRBAG	Rope Bag	45
90115-WPS	Chokestrap Pole Choker	22	ABSRL1.5SH	Single Rope Lanyard	20
AB10	Single Point Harness	13	ABSS	Adjustable Stretcher Positioning Strops	41
AB10/2.4T	Fall Arrest Kit	17	ABSS407	Adjustable Stretcher Positioning Strops	41

Code	Product	Page	Code	Product	Page
ABTL20-2	20m Horizontal System	33	RP320	Large Rigging Plate	46
ABTRL1.25SH	Double Rope Lanyard	20	RP500	Rocker	49
ABWP	Work Positioning Belt	18	RP700	Large Double Pulley	47
ABXLRBAG	Rope Bag	45	RP705	Capture Pulley	48
ALKO	Tripod Leg Clamp	11	RP880	D4 Descender	49
C842	Rescue Screwgate	64	RP881	D4 Descender	49
C853	Boa Twistlock Karabiner	64	RPX200	RESQ RED Pro X Original	42
COMBI	Combination Harness Kit	17	RRST35	Mesh Bolt Bag	69
CONT	Container Safe Kit	33	RS100	Rollable Rescue Stretcher Kit	37
CRP70	Canvas Rope Protector	50	RT07	Rescue Tripod Carry Bag	11
CST1KIT	Confined Space Kit	8	RT3	Two Person Rescue Tripod	6
CST2KIT	Confined Space Kit	8	S2046	Small Snap Hook	63
CST3KIT	Confined Space Kit	8	SLIX100	Rollable Rescue Stretcher	35/36
CST4KIT	Confined Space Kit	9	SLIX100KIT	Stretcher Kit	38
CST5KIT	Confined Space Kit	9	SLIX100XL	Rollable Rescue Stretcher for Bariatrics	36
CST6KIT	Confined Space Kit	9	SLIX100XLKIT	Stretcher Kit for Bariatrics	38
CST7KIT	Confined Space Kit	10	SLIX50COM	Arms Out Stretcher	37
CST8KIT	Confined Space Kit	10	SLIXBAG	Rolltop Carry Bag for SLIX Stretchers	39
CT101.3	Beam Clamp	46	SLIXHALV	Half Stretcher	36
DZ10	Delta Maillon	63	SLIXHHXL	Horizontal Positioning Strops	41
EF5102	Spinal Splint	40	SLIXRR	Rapid Response Stretcher	36
EF5102/2	Spinal Splint with Floatation Aid	40	SLIXRRBAG	Carry Bag for Rapid Response Stretcher	39
EPPLUS	Ribbed Rope Protector	50	SLIXSS	Spinal Splint	40
ER100-4	Edge Roller	50	SLIXVHH	Vertical & Horizontal Positioning Strops	41
EU39	Winch Box	31	SLIXVHXL	Vertical Positioning Strops	41
F8	Heat Shrunken Knotted Rope	45	SLIXWS	Wire Stretcher Anchor Strops	41
FLEXID	Double Flexi Ladder	67	SPALB	Stretcher Positioning Strops	41
FLEXIH	Double Flexi Ladder Hanger	67	SSE/SSH	Snap Scaffold Hook	63
FLEXIS	Single Flexi Ladder	66	ST/044	Basket Stretcher	37
GG201	Girder Anchor	46	STL-PTR-NPG	Pole Top Rescue Kit	43
GOZ07	Oval Maillon	63	STL9318	Bolt Bag	69
HAS18	Fall Arrest/Auto Descent	27	STL9417	Canvas Tool Bag	69
HONOR-T	25m Horizontal System	33	STL9418	Canvas Tool Bag	69
K10DA	Oval Twistlock	64	T05T	AB15RT to Tripod Bracket	11
K10SG	Oval Screwgate	64	T05T-30	AB30T to Tripod Bracket	11
K40SGP	Klettersteig Screwgate	64	T05T-30D	AB30RT to Davit Bracket	61
KH407	Scaffold Twistlock	64	T05TW2	Tuff Winch to Tripod Bracket	11
LADDERKIT	Ladder Rescue Kit	43	T07	Tripod Carry Bag	11
LOPSBAG	Line Ops Rescue Bag	69	T3	Two Person Tripod	6/7
LR/11/1	Static Rope	45	TL507-1.8	Sirocco Mini Shock Lanyard	20
LR/11/100	Static Rope	45	TORQBAG	Carry Bag For TORQ Devices	31
LR/11/200	Static Rope	45	TOWERRESQKIT	Tower Rescue Kit	43
LR/11/50	Static Rope	45	TUFFEXO	Exosphere Anchor	66
MEWP20	MEWP Rescue Kit	43	TUFFEXO4X4	Exosphere Anchor 4x4	66
PPEPZ10	Pear Shaped Maillon	63	TUFFSTEP	Tuff Steps	67
PPESCZ10	Semi-Circular Maillon	63	UH232	Sirocco Harness	15
ROOFER KIT	Complete Roofer Kit	33	UH238	Sirocco Harness	15
RP012	Single Pulley	47	UH238LB	Sirocco Harness	15
RP030	Small Double Pulley	47	VRS	Vertical Rescue System	42
RP033	Double Pulley	47	VWR1	Vertical Work & Rescue System	42
RP034	Double End Pulley	47	WEIGHT30	2x 15kg Weight	55
RP066	Stainless Steel Pulley	48	WINCHBAG	Carry Bag For Winches	31
RP209	Mini Rope Grab	49	WS100	Wire Anchor Sling	23
RP220	Hand Ascender	49	WS150	Wire Anchor Sling	23
RP300	Small Rigging Plate	46	WS200	Wire Anchor Sling	23
RP310	Medium Rigging Plate	46			



Abtech Safety Ltd

Units 1&2 Parkway Business Centre, Sixth Avenue

Deeside Industrial Estate, CH5 2LE

Flintshire, United Kingdom

T: +44 (0)1244 837 050

E: sales@abtechsafety.com

W: www.abtechsafety.com