

PRODUCT BROCHURE

2026/27 V1.0



➤ ABOUT ABTECH SAFETY

RELIABLE EQUIPMENT. TRUSTED BRANDS.

At Abtech Safety, we supply safety and rescue equipment to the businesses that keep industry moving. Since 1991, we've supported PPE providers and resellers with certified, dependable solutions for work at height and in confined spaces.

WHY RESELLERS CHOOSE ABTECH

We design, manufacture, and supply products that are easy to stock, simple to service, and trusted on site. Our core ranges include T3 Tripods, TORQ Fall Arresters, and SLIX Rescue Stretchers – built for durability and backed by the certifications your customers expect (CE, UKCA, EN standards).

Alongside our own products, we supply equipment from carefully selected brands, including STL TECH (PPE trusted across the UK energy sector), TUFF BUILT davits (exclusive UK distribution), CRESTO fall protection, and RESQ evacuation devices. This gives you a complete, reliable portfolio from a single supplier.

BUILT FOR RENTAL & RESALE

We understand your world – fast turnaround, high usage, and strict compliance demand. That's why we prioritise:

- Consistent product quality across batches
- Easy access to manuals and certification documents
- Ongoing technical support from our team
- Practical training and servicing guidance

We're here to support your operation, not complicate it.

STRONG PRODUCT PORTFOLIO

Our range is built around proven equipment that performs in demanding environments. From access and retrieval to fall protection and rescue, every product is selected to help you meet safety standards with confidence.

With recognised brands and dependable supply, you can support your customers with clarity and assurance.



SUPPLYING CONFIDENCE

Partnering with Abtech Safety means dependable supply, practical support, and equipment your customer's trust.

Our aim is to help you to keep safety simple, compliant, and ready to use.

QUALITY & COMPLIANCE

INTERNATIONAL STANDARDS & QUALITY ASSURANCE

Abtech Safety believe in providing quality. It's built into everything we do.

We operate a Quality Management System which complies with the requirements of ISO 9001:2015, ensuring consistent performance, customer satisfaction, and continuous improvement across our operations. This internationally recognised standard helps us meet both regulatory requirements and the real-world needs of our partners.

All Abtech-manufactured PPE products also fully comply with PPE Regulation (EU) 2016/425, overseen by our notified body, SATRA Quality Assurance.

EN 353-2	EN 354
EN 355	EN 358
EN 360	EN 361
EN 362	EN 795
EN 813	EN 1496
EN 1497	EN 1891-A
EN 12278	EN 12492

EN STANDARDS

PRODUCT CONFORMANCE: CE & UKCA MARKING

Quality and compliance go hand in hand at Abtech Safety. All PPE we manufacture carries the **CE** and **UKCA** marks, confirming that our products meet the legal requirements for health, safety, and environmental protection in both the UK and the EU.

These certifications reflect **rigorous third-party testing**, ongoing quality control, and full compliance with **PPE Regulation (EU) 2016/425**. Certification is issued by **SATRA (Notified Body ID 2777)**, ensuring every product meets relevant European Standards.

For our customers, this means complete confidence in the safety, reliability, and legal conformity of every item supplied.

Working Together to Raise Safety Standards

At Abtech Safety, we're proud to collaborate with industry partners who share our mission to improve safety at height and in confined spaces. We're an active member of the **Work at Height Safety Association (WAHSA)** – the UK's lead body representing manufacturers, installers, and users of fall protection and rescue equipment. Through this partnership and others, we help shape safety standards and stay at the forefront of industry developments.



PROUD TO MANUFACTURE IN THE UK

Abtech Safety is a member of Made in Britain, an organisation that recognises and supports British manufacturers. This membership reflects our commitment to producing high-quality safety equipment here in the UK.

Choosing Abtech means choosing:

- **UK-manufactured equipment**
- **Consistent quality and craftsmanship**
- **Reliable lead times and service**
- **Support for local jobs and industry**

When you see the Made in Britain mark, you can trust that our products are built with care, tested to rigorous standards, and ready to perform when it matters most.



ORDERING EQUIPMENT

PLACING ORDERS

All orders must be submitted in writing:

Email: sales@abtechsafety.com

Post: Abtech Safety Ltd
Unit 38, Drive B, First Avenue,
Deeside Industrial Park,
Flintshire, CH5 2NU

Office hours: Monday to Thursday: 08:30 – 16:30
Friday: 08:30 – 14:00

ACCOUNT REQUIREMENTS

The simplest way to order is with an active Abtech Safety customer account. Contact our team to set up yours.

- If you don't have an account, request a credit application or a **pro forma invoice**.
- All pro forma orders must be paid in full before dispatch.

MINIMUM ORDER VALUES

- UK orders: £40.00 before carriage and VAT
- Export orders: £250.00 (Ex Works)

COLLECTIONS

We do not operate a trade counter, but collections can be arranged. Please note on your purchase order if you'd like to collect, and we'll contact you to confirm.

DELIVERY INFORMATION

- Orders received **before 12:00 PM** are dispatched for **next working day delivery (by 17:30)**
- Timed deliveries are available at an additional charge (subject to availability and account status)
- All deliveries depend on product availability and account standing

PAYMENT DETAILS

For account holders, payment instructions will be clearly specified on your invoice. If you have any questions, our team will be happy to assist.



VAT No. 595703115
Co. Reg 2656103



▶ TABLE OF CONTENTS

07 TRIPODS

Two Person Tripods, Two Person Tripod Kits (T3), Two Person Rescue Tripod Kits (RT3), Tripod Brackets, Tripod Accessories

15 DAVITS

Davit Arms, Davit Bases, Barrel Mounts, Davit Brackets, Horizontal Entry, Davit Kits

24 FALL PROTECTION DEVICES

Wire Fall Arresters, Webbing Fall Arresters, Fall Arrest Winches

29 WINCHES

Personnel Winches, Materials Winches, Winch Accessories

31 HARNESES & PERSONAL EQUIPMENT

Full Body Harnesses, Harness Kits, Personal Accessories, Head Protection

36 LANYARDS & SLINGS

Work Positioning, Fall Arrest Lanyards, Anchor Slings

42 STRETCHERS

Rescue Stretchers, Stretcher Kits, Spinal Splints, Stretcher Accessories

48 RESCUE & EVACUATION

Evacuation Devices, Rescue Kits

52 ROPE & ROPE DEVICES

Ropes, Pulleys, Rope Devices, Edge Protection, Rope Bags

57 CONNECTORS

Maillons, Karabiners, Scaffold Hooks

60 ACCESS & ANCHORS

Anchor Devices, Access Solutions, Horizontal Systems, Mobile Anchor Systems

63 TOOL STORAGE & MANAGEMENT

Storage & Transport, Tool Management, Tool Lanyards

67 TERMS AND CONDITIONS

72 PRODUCT INDEX

▶ TRIPODS

Discover the Tripod T3 series, the intersection of cutting-edge engineering and unparalleled functionality. Ideal for rescue missions, working at height, and confined space projects, both the Tripod T3 and RT3 models merge innovation with real world application. Experience heightened safety paired with uncompromising ease of use.

TWO PERSON TRIPODS

TWO PERSON TRIPOD

T3

Versatile aluminium tripod designed for confined space entry, supporting up to two users with a maximum load of 250kg.

Conformance:
EN 795 (Type B)

- Supports up to two users with a maximum load of 250kg
- Telescopic legs adjustable for varied heights and terrains
- Three overhead pulleys compatible with up to 11mm ropes
- Six anchor points for versatile equipment attachment

£946.03



TWO PERSON RESCUE TRIPOD

RT3

Versatile aluminium rescue tripod with six anchor points, designed for confined space entry and casualty retrieval operations.

Conformance:
EN 795 (Type B)

- Six anchor points for multiple attachment configurations
- 360-degree swivelling underslung eyebolts
- Telescopic legs adjustable for diverse operational needs
- Detachable legs for convenient transportation

£1,065.33



TWO PERSON TRIPOD KITS (T3)

T3 CONFINED SPACE KIT 1

CST1KIT

Confined space entry kit featuring the T3 Tripod, 15m TORQ Fall Arrest Winch, and necessary mounting bracket for safe operations.

Conformance:
EN 795 (Type B), EN 360, EN 1496

£2,045.42



T3 CONFINED SPACE KIT 2

CST2KIT

Confined space rescue kit including T3 Tripod, 15m fall arrest winch, tripod bracket, and Cresto 1154R harness.

Conformance:
EN 360, EN 361, EN 795 (Type B), EN 1496, EN 1497

£2,111.53



T3 CONFINED SPACE KIT 3

CST3KIT

Confined space entry featuring the T3 Tripod, 30m TUFF Materials Winch, and mounting bracket for lifting operations.

Conformance:
EN 795 (Type B)

£2,075.67



T3 CONFINED SPACE KIT 4

CST4KIT

Confined space entry and rescue kit featuring the T3 Tripod, 30m AB30RT Fall Arrest Winch, 30m TUFF Personnel winch, and tripod brackets for vertical operations.

Conformance:
EN 795 (Type B), EN 360, EN 1496

£4,900.53



T3 CONFINED SPACE KIT 5

CST5KIT

Confined space entry and rescue kit with T3 Tripod, 30m TUFF Personnel Winch, and tripod bracket – ideal for lifting and lowering personnel safely.

Conformance:
EN 795 (Type B), EN 1496

£3,325.05



T3 CONFINED SPACE KIT 6

CST6KIT

Confined space rescue kit with T3 Tripod, 30m TUFF Personnel Winch, mounting bracket, and CRESTO 1154R harness.

Conformance:
EN 361, EN 795 (Type B), EN 1496, EN 1497

£3,391.15



T3 CONFINED SPACE KIT 7

CST7KIT

Confined space fall arrest kit with T3 Tripod, AB30RT winch, and tripod mounting bracket

Conformance:
EN 795 (Type B), EN 360, EN 1496

£2,630.48



T3 CONFINED SPACE KIT 8

CST8KIT

Confined space kit with T3 Tripod, TORQ winch, bracket, and CRESTO 1154R Active Rescue harness.

Conformance:
EN 360, EN 361, EN 795 (Type B), EN 1496, EN 1497

£2,696.59



Ready for Recovery Operations?

Add a rescue stretcher to support safe casualty handling and recovery.

Browse the complete range of SLIX stretchers on page 42.

TWO PERSON RESCUE TRIPOD KITS (RT3)

RT3 CONFINED SPACE KIT 1

CSRT1KIT

Confined space rescue kit featuring the RT3 Rescue Tripod, 15m TORQ Fall Arrest Winch, and mounting bracket for secure operations.

Conformance:
EN 795 (Type B), EN 360, EN 1496

£2,161.21



RT3 CONFINED SPACE KIT 2

CSRT2KIT

Confined space rescue kit featuring RT3 tripod, 15m TORQ fall arrest winch, mounting bracket, and Cresto 1154R rescue harness.

Conformance:
EN 360, EN 361, EN 795 (Type B), EN 1496, EN 1497

£2,227.32



RT3 CONFINED SPACE KIT 3

CSRT3KIT

Confined space entry kit featuring the RT3 Tripod, 30m TUFF Materials Winch, and mounting bracket – designed for safe and efficient delivery and retrieval operations in vertical entry scenarios.

Conformance:
EN 795 (Type B)

£2,191.46



RT3 CONFINED SPACE KIT 4

CSRT4KIT

Confined space entry and rescue kit featuring the RT3 Tripod, 30m AB30RT Fall Arrest Winch, and mounting brackets—designed for safe and efficient operations in vertical entry scenarios.

Conformance:
EN 795 (Type B), EN 360, EN 1496

£5,016.32



RT3 CONFINED SPACE KIT 7

CSRT7KIT

Confined space fall arrest and rescue kit with RT3 Tripod, AB30RT winch, and tripod mounting bracket.

Conformance:
EN 795 (Type B), EN 360, EN 1496

£2,746.27



RT3 CONFINED SPACE KIT 5

CSRT5KIT

Confined space entry and rescue kit featuring the RT3 Tripod, 30m TUFF Personnel Winch, and mounting bracket—designed for safe and efficient operations in vertical entry scenarios.

Conformance:
EN 795 (Type B), EN 1496

£3,440.84



RT3 CONFINED SPACE KIT 8

CSRT8KIT

Confined space kit with RT3 Tripod, AB30RT winch, bracket, and 1154R Cresto rescue harness.

Conformance:
EN 360, EN 361, EN 795 (Type B), EN 1496, EN 1497

£2,812.38



RT3 CONFINED SPACE KIT 6

CSRT6KIT

Complete rescue kit with RT3 Tripod, 30m TUFF Personnel Winch, mounting bracket, and Cresto 1154R rescue harness.

Conformance:
EN 361, EN 795 (Type B), EN 1496, EN 1497

£3,506.94



TRIPOD BRACKETS

Compatible with TORQ and Tuff Built winches
– See pages 28–29

AB30RT TO TRIPOD BRACKET

T05T-30

Robust mounting bracket designed to securely attach the AB30RT 30m Fall Arrest Recovery Winch to T3 or RT3 tripods, ensuring reliable performance in confined space operations.

Conformance:
EN 795 (Type B)



£169.14

AB15RT TO TRIPOD BRACKET

T05T

Mounting bracket for attaching the 15m TORQ fall arrest winch (AB15RT) to T3 or RT3 tripods for safe confined space operations.

Conformance:
EN 795 (Type B)



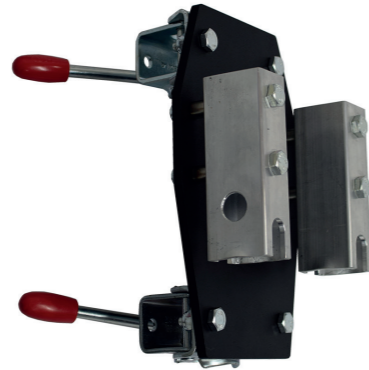
£128.66

TUFF WINCH TO TRIPOD BRACKET

T05TW2

Robust mounting bracket designed to securely attach TUFF winches to T3 and RT3 tripods, ensuring reliable performance in confined space operations.

Conformance:
EN 795 (Type B)



£198.18

TRIPOD ACCESSORIES

TRIPOD CARRY BAG

T07

Tailor-made carry bag designed to securely store and transport the T3 Tripod, enhancing convenience and protection during confined space operations.

Conformance:
Not classified as PPE



£129.44

RESCUE TRIPOD CARRY BAG

RT07

Purpose-built carry bag designed specifically for the RT3 Two-Person Rescue Tripod, ensuring secure storage and easy transportation between rescue operations.

Conformance:
Not classified as PPE



£161.37



DAVITS

Whether you're focused on fall protection, work positioning, rescue operations, confined space entry, or even material handling, look no further. Work positioning becomes effortless, and confined space entry and retrieval comply with international standards. For those situations where installing a personal fall arrest system isn't practical, this davit arm, with a compatible base and winch, safeguards climbers while ascending structures. Browse the Tuff Built davit systems, and make every ascent, every descent, and each task a secure success.

DAVIT ARMS

PRO-3 UPPER DAVIT ARM (SMALL)

30104

Lightweight upper davit arm with 71cm reach and height adjustable from 117cm to 142cm for confined space access and rescue.

Conformance:
EN 795 (Type B)

£1,014.90



PRO-3 UPPER DAVIT ARM (LARGE)

30105

Upper davit arm with 71cm reach and extended height range from 147cm to 170cm, suited for elevated confined space applications.

Conformance:
EN 795 (Type B)

£1,353.21



PRO-3 LOWER DAVIT MAST (SMALL)

30108

102cm davit mast base section designed to support Pro-3 Series upper arms in confined space applications.

Conformance:
EN 795 (Type B)

£817.56



PRO-3 LOWER DAVIT MAST (LARGE)

30109

132cm mast for Pro-3 davit systems, offering increased clearance for elevated confined space rescue tasks.

Conformance:
EN 795 (Type B)

£880.99



**ANALOG ONE-PIECE
DAVIT SYSTEM**

30557



Single-piece davit system for applications where an extended height of 219cm and a reach of 122cm are required.

**Conformance:
EN 795 (Type B)**

£3,032.11

**ANALOG ONE-PIECE
DAVIT SYSTEM (LARGE)**

50048



Single-piece davit system for applications where an extended height of 280cm and a reach of 190cm are required.

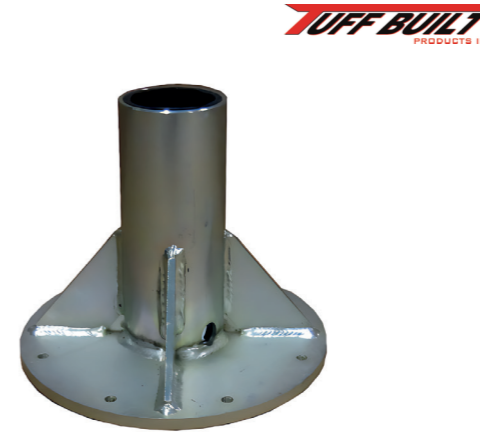
**Conformance:
EN 795 (Type B)**

£3,688.79

DAVIT BASES

DAVIT FLOOR MOUNT BASE

30031



Surface-mounted davit base suitable for various floor types.

**Conformance:
EN 795 (Type B)**

£540.44

**4-POINT DAVIT WALL
MOUNT BASE**

30032



Wall-mounted davit base with 4 fixing points for secure installation.

**Conformance:
EN 795 (Type B)**

£493.72

**FLUSH FLOOR MOUNT BASE
(FRESH CONCRETE)**

30023



Flush-mounted davit base designed for installation in freshly poured concrete surfaces.

**Conformance:
Engineering Calculation**

£504.51

**FLUSH FLOOR MOUNT BASE
(EXISTING CONCRETE)**

30021



Flush-mounted davit base designed for installation in existing concrete surfaces.

**Conformance:
EN 795 (Type B)**

£504.51

Exclusive UK Distribution

Abtech Safety is the exclusive UK distributor of Tuff Built davit systems and anchor solutions.

Building a davit system?

These components are designed to configure your own setup.

For complete davit kits, see pages 22–23.



SLEEVE CAP

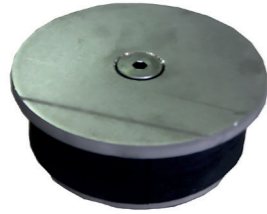
30019



Protective cap designed to cover and protect davit base sleeves when not in use.

Conformance:
Not classified as PPE

£49.41



COUNTERWEIGHT BASE

30073



Portable counterweight base designed for Pro-3 davit systems, offering flexible, freestanding fall protection without permanent installation (weights not included).

Conformance:
EN 795 (Type B)

£3,235.72



2 X 15KG WEIGHT PLATES

WEIGHT30



Pair of 15kg weight plates for use with the 30073 Counterweight Base, ensuring system stability and compliance with safety standards.

Conformance:
Not classified as PPE

£196.75



20KG HAND TEST WEIGHT

PFLK20

20kg weight designed for use with WEIGHTBOX, part of 30073KIT-WB Counterweight Davit Kit. Allows a steady grip for safe placement and removal.

Conformance:
Not classified as PPE

£105.89



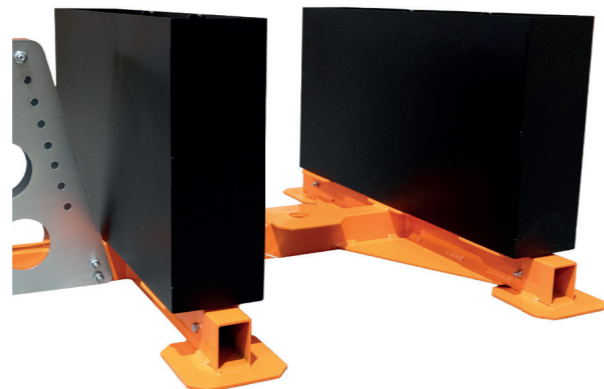
WEIGHT BOX FOR COUNTERWEIGHT BASE

WEIGHTBOX

Steel weight box designed to securely contain 9 x 20kg PFLK20 weights (not included).

Conformance:
Not classified as PPE

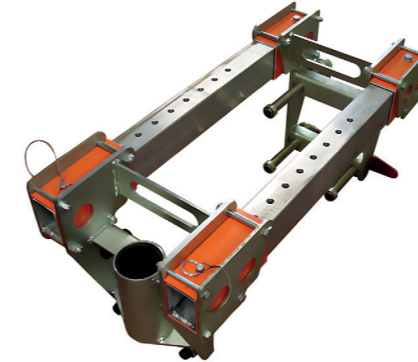
£292.62



BARREL MOUNTS

ADJUSTABLE DAVIT BARREL MOUNT

30029



Adjustable barrel mount for davit systems, accommodating structure widths from 57mm to 635mm.

Conformance:
EN 795 (Type B)

£2,438.58

FIXED DAVIT BARREL MOUNT (50.8MM)

30036



Fixed barrel mount base designed for secure attachment to trench boxes or similar structures with a maximum width of 50.8mm.

Conformance:
EN 795 (Type B)

£1,342.59

FIXED DAVIT BARREL MOUNT (127MM)

30161



Fixed barrel mount base suitable for trench boxes or structures with a maximum width of 127mm.

Conformance:
EN 795 (Type B)

£1,576.89

FIXED DAVIT BARREL MOUNT (181MM)

30166



Fixed barrel mount base designed for trench boxes or structures with a maximum width of 181mm.

Conformance:
EN 795 (Type B)

£1,702.04

DAVIT KITS

COUNTERWEIGHT KIT

30073KIT



Portable counterweight davit system designed for confined space entry, rescue, and fall protection without the need for permanent anchoring.

Conformance:
EN 795 (Type B),
EN 360, EN 1496

£11,413.68



COUNTERWEIGHT DAVIT KIT WITH WEIGHT BOXES

30073KIT-WB



Portable counterweight davit kit includes 2 steel weight boxes. PFLK20 hand-test weights NOT included.

Conformance:
EN 795:2012 (Type B), EN 360,
EN 1496

£11,769.31



ADJUSTABLE BARREL MOUNT KIT

30029KIT



Fully featured davit kit with adjustable barrel clamp mount for trench edges from 57–635mm, ideal for confined space rescue and personnel lifting.

Conformance:
EN 795 (Type B),
EN 360, EN 1496

£8,206.89



4 PIECE BASE KIT

30070KIT



Modular 4-piece davit system with portable base, offering flexible vertical entry and rescue from confined spaces.

Conformance:
EN 795 (Type B),
EN 360, EN 1496

£6,710.68



57MM BARREL MOUNT KIT

30036KIT



Davit system with fixed barrel for up to 57mm wide trench edges, designed for vertical confined space entry and rescue operations.

Conformance:
EN 795 (Type B),
EN 360, EN 1496

£7,260.60



127MM BARREL MOUNT KIT

30161KIT



Davit kit includes personnel and fall arrest winches. The 127mm barrel mount is tailored for larger trench boxes and shoring applications.

Conformance:
EN 795 (Type B),
EN 360, EN 1496

£7,499.83



181MM BARREL MOUNT KIT

30166KIT



Davit kit includes 2 winches and a 181mm barrel mount, suitable for extra-wide trench boxes and shoring structures.

Conformance:
EN 795 (Type B),
EN 360, EN 1496

£7,627.62



BARREL MOUNT KIT BOX

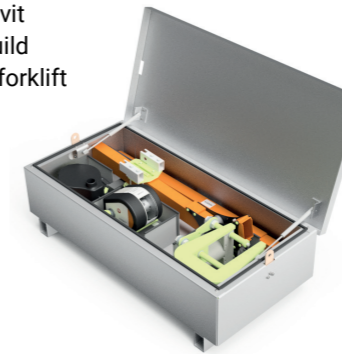
71493



A storage box that keeps a Tuff Built Barrel Mount Davit Kit protected. The solid build helps protect gear during forklift transport and storage.

Conformance:
Not classified as PPE

£1,500.00



POLE HOIST KIT

30040KIT



Pole hoist and winch system with adjustable reach from 1.52m to 3.05m, designed for horizontal entry into confined spaces with vertical retrieval.

Conformance:
EN 795 (Type B),
EN 1496

£5,682.09



VEHICLE HITCH MOUNT KIT

30093KIT



Davit system utilising a vehicle's hitch as a counterweight, ideal for mobile confined space operations.

Conformance:
EN 795 (Type B), EN 1496

£7,610.55





FALL PROTECTION DEVICES

Abtech Safety provides a variety of meticulously curated Fall Arrest solutions to encompass a broad spectrum of top-tier safety solutions, from retractable type fall arresters and winches to rescue devices and specialist systems. Leading our line-up is the TORQ series of retractable type fall arresters-including TORQ Max, TORQ, TORQ Lite, and TORQ Micro. This range has been engineered to offer certified protection, ease of use, and durability in a variety of height-work scenarios. Browse our range of solutions and empower your work at heights with unparalleled safety and confidence.

WIRE FALL ARRESTERS

TORQ LITE RETRACTABLE FALL ARRESTER (6M)

ABRL06

Compact and durable 6-metre retractable fall arrester featuring a galvanised steel cable, designed for reliable fall protection in various working-at-height scenarios.

Conformance:
EN 360

£346.78



TORQ

TORQ LITE RETRACTABLE FALL ARRESTER (10M)

ABRL10

10-metre retractable fall arrester with galvanised steel cable, designed for reliable fall protection in various working-at-height scenarios.

Conformance:
EN 360

£411.48



TORQ

TORQ LITE RETRACTABLE FALL ARRESTER (20M)

ABRL20

20-metre retractable fall arrester with galvanised steel cable, designed for reliable fall protection in various working-at-height scenarios.

Conformance:
EN 360

£602.87



TORQ

TORQ RETRACTABLE FALL ARRESTER (15M)

AB15T

15-metre retractable fall arrester with galvanised steel cable, designed for reliable fall protection in various working-at-height scenarios.

Conformance:
EN 360, ANSI Z359.1

£672.26



TORQ

TORQ MAX RETRACTABLE FALL ARRESTER (30M)

AB30T

30-metre retractable fall arrester with galvanised steel cable, designed for reliable fall protection in various working-at-height scenarios.

Conformance:
EN 360

£712.15



TORQ

WEBBING FALL ARRESTERS

TORQ LITE WEBBING FALL ARRESTER (3M)

ABRL03W

3-metre retractable fall arrester with polyester webbing, designed for reliable fall protection in various working-at-height scenarios.

Conformance:
EN 360

£132.36



TORQ

TORQ LITE WEBBING FALL ARRESTER (6M)

ABRL06W

6-metre retractable fall arrester with polyester webbing, designed for reliable fall protection in various working-at-height scenarios.

Conformance:
EN 360

£152.73



TORQ

TORQ MICRO 2M FALL ARRESTER, SWIVEL HOOK

H2.0-9666

Compact and lightweight 2m self-retracting webbing fall arrester featuring a swivel hook connector and integrated energy absorber. Designed to provide reliable fall protection in a wide range of working-at-height applications.

Conformance:
EN 360, VG11.060, VG11.062

£217.09



TORQ

TORQ MICRO 2M FALL ARRESTER, LARGE HOOK

H2.0-9680

Compact and lightweight 2m self-retracting webbing fall arrester featuring a large scaffold hook and integrated energy absorber. Designed to provide reliable fall protection in a wide range of working-at-height applications.

Conformance:
EN 360, VG11.060, VG11.062

£219.69



TORQ

TORQ TWIN MICRO 2M FALL ARRESTER, LARGE HOOKS

H2.0-T-9680

Compact and lightweight twin 2m self-retracting webbing fall arrester featuring large scaffold hooks and integrated energy absorbers. Designed to provide reliable fall protection in a wide range of working-at-height applications.

Conformance:
EN 360, VG11.060, VG11.062

£459.98



TORQ

TORQ MICRO 3.5M FALL ARRESTER, LARGE HOOK

H3.5-9680

Compact and lightweight 3.5m self-retracting webbing fall arrester featuring a large scaffold hook and integrated energy absorber. Designed to provide reliable fall protection in a wide range of working-at-height applications.

Conformance:
EN 360, VG11.060, VG11.062

£240.46



TORQ

FALL ARREST WINCHES

TORQ FALL ARREST WINCH (15M)

AB15RT

TORQ

15-metre retractable fall arrest device with integrated winch, designed for reliable fall protection and efficient rescue in both working at height and confined space scenarios.

Conformance:
EN 360, EN 1496 Class A & B, ANSI Z359.1

£991.38



TORQ MAX FALL ARREST WINCH (30M)

AB30RT

TORQ

30-metre retractable fall arrest winch with galvanised steel cable, designed for reliable fall protection and rescue operations in various working-at-height scenarios.

Conformance:
EN 360, EN 1496

£1,541.88



WINCHES



Whether you're involved in rescue operations, maintenance tasks, or confined space projects, Abtech Safety have a winch that ticks every box. Engineered for heavy-duty challenges, these devices seamlessly pair with the T3 Tripods and our range of Tuff Built davit systems thanks to specialist brackets, designed to ensure a secure fit. Say goodbye to hauling headaches Abtech Safety has you covered.

PERSONNEL WINCHES

TUFF PERSONNEL WINCH (30M)

60005

TUFF BUILT
PRODUCTS INC.

Versatile 30-metre personnel winch designed for confined space entry, rescue operations, and work positioning. Offers an 11:1 mechanical advantage for smooth and efficient operation.

Conformance:
EN 1496

£2,214.43



TUFF PERSONNEL WINCH (45M)

60011

TUFF BUILT
PRODUCTS INC.

Robust 45-metre personnel winch designed for confined space entry, rescue operations, and work positioning, offering a high weight capacity and efficient mechanical advantage.

Conformance:
EN 1496

£3,368.03



MATERIALS WINCHES

TUFF MATERIALS WINCH (30M)

60257

TUFF BUILT
PRODUCTS INC.

Robust 30-metre materials winch designed for lifting loads up to 315kg, featuring a high mechanical advantage and compatibility with Abtech Safety's T3 tripods and TUFF davit systems.

Conformance:
Not classified as PPE

£1,024.38



WINCH ACCESSORIES

CARRY BAG FOR WINCHES

WINCHBAG

Heavy-duty carry bag with solid wood base, zip closure, and internal Velcro straps for secure transport of winch devices. WINCHBAG is designed to hold a 60005 or 60257 winch.

Conformance:
Not classified as PPE

£97.89



WINCH BOX WITH FOAM INSERTS

EU39

Durable plastic winch box with custom foam inserts, designed for secure storage and transportation of winch devices.

Conformance:
Not classified as PPE

£102.64



CARRY BAG FOR TORQ DEVICES

TORQBAG

Durable carry bag with solid wood base, zip closure, and internal Velcro straps for secure transport of TORQ fall arrest devices. TORQBAG is designed to hold a AB15T or AB15RT winch.

Conformance:
Not classified as PPE

£97.89



TORQ



HARNESSES & PERSONAL EQUIPMENT

Harnesses are the foundation of safe working at height, providing secure attachment, support, and comfort across a wide range of applications. Abtech Safety supplies harnesses designed for professionals working in construction, utilities, confined space, rescue, and industrial environments. Whether accessing confined spaces or operating at height on site, each harness is engineered for reliability, compliance, and comfort. Built with precision and designed for performance, our range delivers the confidence you need to work safely and efficiently.

FULL BODY HARNESSES

Complete your fall protection set-up with fall arrest, restraint and work positioning lanyards and slings on page 36

CRESTO CORE BASE SINGLE POINT HARNESS

1151

CRESTO

Durable, single-point fall arrest harness designed for general work-at-height applications.

Conformance:
EN 361

£57.79



CRESTO CORE ACTIVE TWO POINT HARNESS

1154

CRESTO

Versatile two-point harness with front and rear attachment points, suitable for various industrial applications.

Conformance:
EN 361

£62.53



CRESTO CORE ACTIVE RESCUE HARNESS

1154R

CRESTO

Two-point harness with an additional rescue D-ring, designed for confined space entry and rescue operations.

Conformance:
EN 361, EN 1497

£68.38



CRESTO WORKER PRO HARNESS

1123

CRESTO

Advanced full-body harness with patented front webbing loops and breathable padding for superior safety and comfort at height.

Conformance:
EN 361

£235.89



CRESTO ENERGY PRO HARNESS

1136

CRESTO



High-performance harness designed for industrial tower and pole climbing, offering exceptional ergonomics and comfort.

Conformance:
EN 361, EN 358, EN 813

£406.42

CRESTO ENERGY PRO WIND HARNESS

1136WIND

CRESTO



Customised harness tailored for wind turbine work, combining lightweight design with robust features.

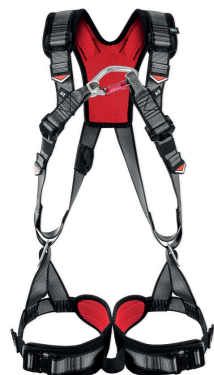
Conformance:
EN 361, EN 358, EN 813

£415.89

CRESTO FUSION ACTIVE

1118

CRESTO



Slim, premium harness offering maximum comfort and simplicity, approved for work positioning without a support belt.

Conformance:
EN 361, CNB/P11.043 V2

£252.95

CRESTO FUSION ACTIVE + WIND HARNESS

1137

CRESTO



Ergonomic harness engineered for wind power technicians, ensuring comfort and safety during high-altitude tasks.

Conformance:
EN 361, EN 358

£425.37

CRESTO FUSION PRO WIND HARNESS

1138

CRESTO



Ergonomic rescue-ready harness designed for wind turbine access and rescue, with luminous D-rings and pressure relieving seat support.

Conformance:
EN 361, EN 358,
ANSI Z359.11-2014

£434.84

CRESTO RIGGER BASE HARNESS

1165

CRESTO



Built for rope access pros, the CRESTO 1165 harness offers a stable fit with fixed adjusters and a modular design. Removable top, flexible ascender choice, and easy-access tool loops keep work simple and efficient.

Conformance:
EN 12277, EN 358, EN 362,
EN 813

£323.00

STL TECH SIRROCCO WORK POSITIONING HARNESS

UH232

**STL
TECH**



The harness' fixed shoulder pads with double adjustment lightweight mesh and fabric belt ensure comfortable use.

Conformance:
EN 361, EN 358, EN 813

£485.77

STL TECH SIROCCO WORK POSITIONING HARNESS

UH238

**STL
TECH**



The harness includes five attachment points: two side, two front and one rear, quick release buckles and breathable mesh padding for increased comfort.

Conformance:
EN 361, EN 358, EN 813

£447.74

SIROCCO WORK POSITIONING HARNESS WITH LEATHER BELT

UH238LB

**STL
TECH**



The leather waist pad on the 238 LB is designed for hard-wearing conditions, ensuring your harness stays intact even in the most gruelling work environments.

Conformance:
EN 361, EN 358, EN 813

£711.11

HARNESSES KITS

WORKING AT HEIGHT KIT 1

WAHK1

Essential fall protection kit with CRESTO 1151 harness, 1507H shock-absorbing 1.8m fall arrest lanyard, and a durable kit bag.

Conformance:
EN 361, EN 355

£155.16



WORKING AT HEIGHT KIT 2

WAHK2

Kit includes CRESTO 1154 harness, featuring front and rear attachment points. 1507H 1.8m fall arrest lanyard, and storage bag.

Conformance:
EN 361, EN 355

£159.89



WORKING AT HEIGHT KIT 3

WAHK3

Fall protection kit with CRESTO 1154 dual-point harness and 1508H 1.9m twin-leg fall arrest lanyard for continuous safety during movement.

Conformance:
EN 361, EN 355

£201.58



ACCESS PLATFORM KIT 1

APK1

Fall restraint kit featuring CRESTO 1154 dual-point harness and ABRSTADJ adjustable lanyard for safe access platform operations.

Conformance:
EN 361, EN 358

£113.14



FALL ARREST KIT 1

FAK1

Fall arrest kit featuring CRESTO 1151 harness with rear D-ring and 2m TORQ Micro retractable fall arrester.

Conformance:
EN 360, EN 361

£282.25



PERSONAL ACCESSORIES

PERSONAL PLUS SAFETY BELT

BSPER+SB-A

Lightweight and durable work positioning belt with dual side D-rings, tool loops, and adjustable fit for enhanced stability during tasks at height.

Conformance:
EN 358

£49.74



LEG SUSPENSION STEP

ABLSS

Lightweight, adjustable step designed to alleviate pressure after a fall by enabling a standing position during prolonged suspension in a harness.

Conformance:
Not classified as PPE

£38.23



RESCUE NAPPY

ABNAP

The Rescue Nappy's design ensures adults and children alike are held in a near-vertical position, making extraction smoother and safer.

Tested to:
EN 1497

£87.06



CRESTO WORK SEAT

ASC-ST001

The CRESTO Work Seat is engineered to provide superior comfort and support for professionals engaged in extended work at height.

Conformance:
EN 358

£134.53



BOSUNS CHAIR

ABBC

For a seated position when in a full body harness. Complete with foot rest and tool pockets.

Conformance:
Not classified as PPE

£324.62



HEAD PROTECTION

CRESTO CROWN ELECTRO HELMET

012263105

Electrically insulated hi-viz red safety helmet with no ventilation or conductive parts, certified for 1000V AC and 1500V DC use.

Conformance:
EN 397:2012+A1, EN 50365

£89.42





LANYARDS & SLINGS

Abtech Safety offers a versatile range of lanyards and slings for work positioning, anchoring, and tool tethering. Our adjustable work positioning lanyards keep users stable and secure during hands-free tasks. Anchor slings come in high-visibility colours and various lengths for easy, reliable attachment. Tool lanyards help prevent dropped objects on site. Designed for strength, flexibility, and safety, all products are built to meet industry standards and support safe, efficient work at height.

WORK POSITIONING

ADJUSTABLE RESTRAINT LANYARD

ABRSTADJ

Adjustable webbing lanyard (0.94–1.48m) with screwgate karabiners, designed to restrict user movement in work positioning applications.

Conformance:
EN 358

£43.24



CRESTO SIMO S WORK POSITIONING LANYARD (1.5M)

2342-1.5

CRESTO

1.5m adjustable polyamide lanyard with rope grab, ideal for compact work positioning tasks.

Conformance:
EN 358, EN 795

£111.79

1.5M



CRESTO SIMO S WORK POSITIONING LANYARD (2M)

2342-2

CRESTO

2m adjustable lanyard with kernmantle rope and rope grab for versatile industrial work positioning.

Conformance:
EN 358, EN 795

£112.84

2M



CRESTO SIMO S WORK POSITIONING LANYARD (5M)

2342-5

CRESTO

5m adjustable lanyard with kernmantle rope and certified hardware for extended work positioning applications.

Conformance:
EN 358, EN 795

£128.84

5M



CHOKESTRAP POLE CHOKER

90115-BSH

Pole choker with 2-stage snaphook, designed for secure work positioning on poles 180–350mm in diameter.

Conformance:
ENA TS 43-123
Classification A1

£295.55



CHOKESTRAP POLE CHOKER

90115-SP

Pole Choker with snaphook and integrated handles, designed for secure work positioning on poles 180–350mm in diameter.

Conformance:
ENA TS 43-123
Classification A1

£296.60



CHOKESTRAP POLE CHOKER

90115-WPS

Pole choker with 2-stage karabiner, designed for secure work positioning on poles 180–350mm in diameter.

Conformance:
ENA TS 43-123
Classification A1

£287.45



POLECAT POLE CHOKER

120POLECAT

Adjustable pole choker with mini shock absorber and rubber grip pads, designed for secure work positioning on poles.

Conformance:
EN 358

£374.27



ROPE RAT WORK POSITIONING LANYARD (2M)

90176-2M-CR

2m adjustable kernmantle rope lanyard with rope grab and protective cover for secure work positioning.

Conformance:
EN 358

£202.43



FALL ARREST LANYARDS

CRESTO CORE SINGLE FALL ARREST LANYARD (SOFT LOOP) 1505

CRESTO®



1.7-metre single-leg fall arrest lanyard with soft loops and integrated energy absorber, designed for reliable fall protection in working-at-height scenarios.

Conformance:
EN 355

£41.68

CRESTO CORE SINGLE FALL ARREST LANYARD WITH HOOK 1505H

CRESTO®



Durable single-leg fall arrest lanyard with integrated energy absorber and scaffold hook, designed for reliable fall protection in various working-at-height scenarios.

Conformance:
EN 354, EN 355

£82.42

CRESTO CORE SINGLE-FLEX FALL ARREST LANYARD 1507H

CRESTO®



1.8-metre single-leg fall arrest lanyard with flexible webbing, integrated energy absorber, and 60mm scaffold hook, designed for enhanced mobility and reliable fall protection in various working-at-height scenarios.

Conformance:
EN 355

£90.00

CRESTO CORE TWIN-FLEX FALL ARREST LANYARD 1508H

CRESTO®



Twin-leg fall arrest lanyard with flexible webbing, integrated energy absorber, and 60mm scaffold hooks, designed for continuous fall protection during transitions at height.

Conformance:
EN 355

£131.68

CRESTO CORE SINGLE EDGE ROPE FALL ARREST LANYARD 1503H

CRESTO®



Single-leg fall arrest lanyard with 12mm flexible rope and integrated energy absorber, designed for reliable fall protection in environments with sharp edges.

Conformance:
EN 355, PPE-R/11.074

£118.42

CRESTO CORE TWIN EDGE ROPE FALL ARREST LANYARD 1504H

CRESTO®



Twin-leg fall arrest lanyard with 12mm flexible rope and integrated energy absorber, designed for reliable fall protection in environments with sharp edges.

Conformance:
EN 355, PPE-R/11.074 V3

£169.58

MINISHOCK CUT RESISTANT FALL ARREST LANYARD 1.75MINISHOCKCR

1.75MINISHOCKCR



Lightweight 1.75m fall arrest lanyard featuring a heat- and cut-resistant Technora® braid rope, designed for enhanced safety in extreme environments.

Conformance:
EN 355, EN 362, EN 1891 (Type A)

£206.58

ANCHOR SLINGS

NEON GREEN ANCHOR SLING (0.6M) 012255022



0.6M

0.6m neon anchor, designed for secure attachment in confined spaces.

Conformance:
EN 354, EN 566,
EN 795 (Type B)

£11.81

NEON RED ANCHOR SLING (0.8M) 012255024



0.8M

0.8m neon anchor sling, ideal for versatile anchorage applications.

Conformance:
EN 354, EN 566,
EN 795 (Type B)

£12.38

NEON YELLOW ANCHOR SLING (1.5M) 012255029



1.5M

1.5m neon anchor sling, ideal for anchoring around large structures.

Conformance:
EN 354, EN 566,
EN 795 (Type B)

£15.75

WIRE ANCHOR SLING (1M) WS100



1M

1.0m galvanised steel wire anchor sling with PVC cover for secure anchorage in a range of operational environments.

Conformance:
EN 795 (Type B)

£24.65

NEON ORANGE ANCHOR SLING (1M) 012255026



1M

1.0m neon anchor sling, suitable for standard anchorage setups.

Conformance:
EN 354, EN 566,
EN 795 (Type B)

£13.50

NEON BLUE ANCHOR SLING (1.2M) 012255028



1.2M

1.2m neon anchor sling, offering extended reach for varied anchoring needs.

Conformance:
EN 354, EN 566,
EN 795 (Type B)

£14.63

WIRE ANCHOR SLING (1.5M) WS150



1.5M

1.5m galvanised steel wire anchor sling with PVC cover for versatile anchorage applications.

Conformance:
EN 795 (Type B)

£26.86

WIRE ANCHOR SLING (2M) WS200



2M

2.0m galvanised steel wire anchor sling with PVC cover for anchoring around larger structures.

Conformance:
EN 795 (Type B)

£30.59



STRETCHERS

At Abtech Safety, we're committed to elevating safety and efficiency in the most critical moments. Our Rescue and Evacuation solutions, headlined by the pioneering SLIX® stretcher range, are engineered for real-world challenges, ensuring readiness, versatility, and utmost care in rescue operations. From the adaptable SLIX 100 Rollable Rescue Stretcher to the SLIX 100XL for bariatrics, our stretchers cater to diverse needs with ease and precision. Complementing the SLIX® series, we offer Cresto Safety's robust RESQ RED Pro X and the compact Smartline X. These specialised systems demonstrate our commitment to innovative, user-friendly solutions. Each product is a testament to our dedication to provide Rescue workers with the right tools, technology, and tactical superiority.

RESCUE STRETCHERS

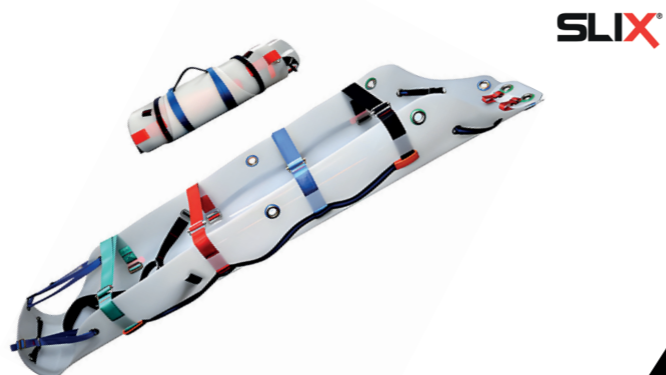
SLIX ROLLABLE RESCUE STRETCHER

SLIX100

Flexible and durable roll-up stretcher for confined space and general rescue, designed for vertical and horizontal lifting.

Conformance:
MDR 2017/745

£683.71



SLIX ROLLABLE BARIATRIC RESCUE STRETCHER

SLIX100XL

Extra-wide roll-up stretcher for bariatric rescue. Additional lifting eyes for even distribution of weight.

Conformance:
MDR 2017/745

£1,082.60



SLIX ROLLABLE HALF RESCUE STRETCHER

SLIXHALV

Designed for 'arms out' use, it includes groin straps and a head pocket for extra casualty security. This stretcher includes a carry bag.

Conformance:
MDR 2017/745

£620.91



SLIX ROLLABLE RESCUE STRETCHER WITH SPINAL SPLINT

SLIX50COM

A versatile rollable rescue stretcher designed for confined space operations, featuring an integrated spinal splint and optional articulated skirt for enhanced patient protection. This stretcher includes a carry bag.

Conformance:
MDR 2017/745

£1,354.59



SLIX RAPID RESPONSE STRETCHER

SLIXRR

Ideal for slopes and confined spaces, SLIXRR is built for fast evacuation with a simple load-and-drag design. Suitable for mass casualty situations. This stretcher includes a carry bag.

Conformance:
MDR 2017/745

£488.57



BASKET STRETCHER

ST/044

Rigid basket stretcher with lifting points and built-in runners for rope, hand, or helicopter evacuation.

Conformance:
Not classified as PPE

£1,097.59



STRETCHER KITS

SLIX RESCUE STRETCHER KIT

SLIX100KIT

A compact and robust rescue stretcher kit designed for confined space and general rescue operations, featuring a rollable stretcher, lifting strops, and a carry bag.

Conformance:
MDR 2017/745, EN 358

£818.04



SLIX

SLIX BARIATRIC RESCUE STRETCHER KIT

SLIX100XLKIT

A bariatric rescue stretcher kit designed for the transport and evacuation of clinically obese individuals, featuring a wider stretcher, lifting strops, and a carry bag.

Conformance:
MDR 2017/745, EN 358

£1,306.04



SLIX

ROLLABLE RESCUE STRETCHER

RS100

A versatile rescue stretcher kit suitable for various rescue applications, including confined space, vertical, and horizontal evacuations, featuring a rollable stretcher and comprehensive accessories.

Conformance:
Not classified as PPE

£796.68



SPINAL SPLINTS

SLIX SPINAL SPLINT

SLIXSS

A compact and versatile spinal splint designed for secure immobilisation during patient extrication, compatible with standard cervical collars.

Conformance:
MDR 2017/745

£601.31



SLIX

SPINAL SPLINT

EF5102

An extrication spinal fixation device designed for immobilising and securing the spine during patient transport, featuring colour-coded straps for efficient application.

Conformance:
Not classified as PPE

£292.89



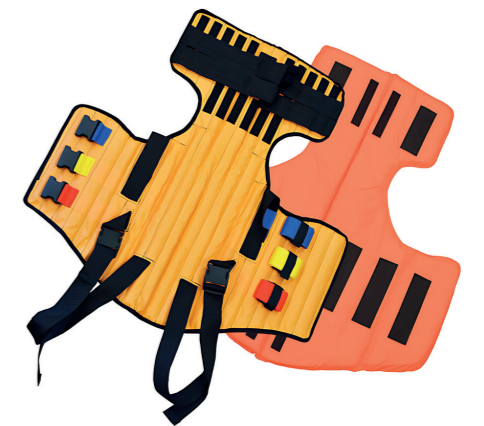
SPINAL SPLINT WITH FLOTATION AID

EF5102/2

A spinal splint equipped with a removable flotation insert, designed for immobilising and transporting casualties during water rescues.

Conformance:
Not classified as PPE

£357.33



STRETCHER ACCESSORIES

VERTICAL & HORIZONTAL LIFTING BRIDLES FOR SLIX100

SLIXVHH



A four-point lifting bridle designed for vertical and horizontal evacuation using the SLIX100 stretcher.

Conformance:
EN 358

£107.76

VERTICAL LIFTING BRIDLES FOR SLIX100XL

SLIXVHXL



A vertical lifting bridle designed for the SLIX100XL bariatric stretcher, enabling safe vertical evacuation.

Conformance:
EN 358

£107.76

HORIZONTAL LIFTING BRIDLES FOR SLIX100XL

SLIXHHXL



A horizontal lifting bridle designed for the SLIX100XL stretcher, enabling safe horizontal evacuation.

Conformance:
EN 358

£107.76

ADJUSTABLE STRETCHER POSITIONING STROPS

ABSS/407



Adjustable positioning strops for stretcher orientation control during lifting operations.

Conformance:
EN 358

£370.54

SLIX WIRE STRETCHER ANCHOR STROPS

SLIXWS



Wire anchor strops designed for use with SLIX stretchers in confined spaces with limited headroom.

Conformance:
EN 795 (Type B)

£91.66

SLIX CARRY BAG

SLIXBAG



Durable roll top carry bag designed to transport and store a variety of SLIX stretchers, including SLIX100, SLIX50COM, SLIXHALV, SLIX100XL.

Conformance:
Not classified as PPE

£106.74

SLIXRR CARRY BAG

SLIXRRBAG



Compact carry bag for transporting and storing the SLIXRR Rapid Response Stretcher. Bag colour may vary from item shown.

Conformance:
Not classified as PPE

£76.88



RESCUE & EVACUATION

Abtech Safety offers a reliable range of rescue and evacuation solutions designed for emergency use at height. Our RESQ evacuation devices provide controlled, safe descent in critical situations, while our rescue kits are pre-assembled for rapid deployment across various scenarios, including MEWPs, towers, and vertical rescue. Each system is built for ease of use under pressure, meets relevant safety standards, and is supported by guidance from our technical team.

EVACUATION DEVICES

RESQ RED PRO X ORIGINAL (100M)

RPX200



High-performance evacuation device with kit including 100m rope, designed for controlled descents carrying up to 140 kg.

Conformance:
EN 341, EN 1496, ANSI Z359.4-2013,
CSA Z259.2.3-12

£2,633.68



RESQ SMARTLINE X (15M)

012230117



Ultra-compact personal evacuation device with 15m aramid rope, designed for controlled descents carrying up to 140 kg.

Conformance:
EN 341 (Type 1A)

£434.84



RESQ SMARTLINE X (25M)

012230118



Ultra-compact personal evacuation device with 25m aramid rope, designed for controlled descents carrying up to 140 kg.

Conformance:
EN 341 (Type 1A)

£483.16



RESQ SMARTLINE X ULTRA VACUUM

012230132



Compact, vacuum-sealed personal evacuation device with 100m aramid rope for controlled descents carrying up to 140 kg.

Conformance:
EN 341 (Type 1, Class D)

£967.26



RESQ SOLO X WIND

8110222100



Ultra-compact, fully automatic evacuation device with 100m rope. Solo X boasts a lifespan of up to 30 years with minimal maintenance.

Conformance:
EN 341 (Type 1D),
ANSI Z359.4-2013

£1,467.47



RESCUE KITS

TWO-WAY LOCKING RESCUE SYSTEM (15M)

ABRALF



15m two-way locking rescue system with over-speed brake, designed for confined space and vertical rescue operations.

Conformance: EN 1491 (Type A)

£1,131.97

VERTICAL WORK & RESCUE SYSTEM (15M)

VWR1



15m vertical work and rescue system with pre-rigged pulley setup for efficient raising and lowering operations.

Conformance: EN 12278, EN 1891 (Type A)

£779.33

VERTICAL RESCUE SYSTEM

VRS



15m Vertical Rescue System with a 4:1 mechanical advantage. Telescopic reach pole for attaching the system to a suspended person.

Conformance: EN 1891 (Type A), EN 12278

£907.71

LADDER RESCUE KIT

LADDERKIT



STL
TECH

Comprehensive ladder rescue kit with 25m rope, belay device, and anchoring equipment for safe and efficient rescues.

Conformance: EN 362, EN 795, EN 341

£653.98

MEWP EVACUATION KIT

MEWP-20



STL
TECH

20m evacuation kit with Lory belay device, ladder, and rescue bag for safe emergency descents from MEWPs.

Conformance: EN 362, EN 795, EN 341

£579.88

POLE TOP RESCUE KIT (20M)

STL-PTR-NPG



STL
TECH

20m pole top rescue kit with Lory belay device, carabiners, and cutting shears for fast, controlled casualty retrieval.

Conformance: EN 362, EN 795, EN 341

£536.27

TOWER RESCUE KIT (60M)

TOWERRESQKIT



STL
TECH

60m tower rescue kit with Lory belay device, karabiners, and safety knife for emergency descent and recovery operations. Tailored rope lengths available.

Conformance: EN 362, EN 795, EN 341

£747.85

50KG ADULT DUTY RANGE MANIKIN

RLN50



Used by Fire and Rescue Services, rescue teams, and safety trainers, the RLN50 supports repeat drills without risk to real people, helping build skill and control in high-stress tasks.

Conformance: EN ISO 12947-2, EN ISO 14116

£1,815.51



ROPE & ROPE DEVICES

Rope Rigging tools are designed to ensure your safety and efficiency in the most challenging environments. From ropes that blend strength with flexibility to advanced pulleys and descenders, Abtech Safety has got your back, quite literally. Dive into the world of rope access equipment and discover how to remain securely connected to your tasks, ensuring safety at every step. Ready to gear up?

ROPES

NYLON ROPE WITH PLASTIC EYES (5M)	ABR05
--	--------------

5m of 16mm nylon rope with plastic eyes at both ends, ideal for short-range work positioning and restraint tasks.

Conformance:
Not classified as PPE

£75.24



5M

NYLON ROPE WITH PLASTIC EYES (10M)	ABR10
---	--------------

5m of 16mm nylon rope with plastic eyes at both ends, ideal for short-range work positioning and restraint tasks.

Conformance:
Not classified as PPE

£95.80



10M

NYLON ROPE WITH PLASTIC EYES (15M)	ABR15
---	--------------

10m of 16mm nylon rope with plastic eyes, designed for medium-range work positioning and restraint applications.

Conformance:
Not classified as PPE

£116.36



15M

NYLON ROPE WITH PLASTIC EYES (20M)	ABR20
---	--------------

20m of 16mm nylon rope with plastic eyes, designed for long-range work positioning and restraint applications.

Conformance:
Not classified as PPE

£136.86



20M

STATIC ROPE 1M OF 11MM	LR/11/1
-------------------------------	----------------

32 strand Polyamide construction provides excellent wear resistance, good grip and lovely handling characteristics.

Conformance:
EN 1891 (Type A)

Price per meter: £2.93



1M

11MM STATIC ROPE (50M)	LR/11/50
-------------------------------	-----------------

50m abrasion-resistant static rope with 34kN strength, ideal for rope access and rescue operations.

Conformance:
EN 1891 (Type A)

£143.34



50M

11MM STATIC ROPE (100M)	LR/11/100
--------------------------------	------------------

50m abrasion-resistant static rope with 34kN strength, ideal for rope access and rescue operations.

Conformance:
EN 1891 (Type A)

£286.67



100M

11MM STATIC ROPE (200M)	LR/11/200
--------------------------------	------------------

200m high-strength static rope with 34kN rating, designed for extensive rope access and rescue operations.

Conformance:
EN 1891 (Type A)

£573.06



200M

HEAT SHRUNK KNOTTED ROPE	F8
---------------------------------	-----------

11mm static rope with heat-shrunk figure 8 knot and K10SG screw gate karabiner for secure anchoring. Add "/F8" to a static rope order to include this configuration (e.g. LR/11/XX/F8).

Conformance:
EN 1891 (Type A), EN 362

£16.63



PULLEYS

DOUBLE PULLEY (SMALL)

RP030



Compact double pulley with 36kN strength, suitable for ropes up to 13mm in diameter.

Conformance: EN 12278

£44.46

DOUBLE PULLEY (MEDIUM)

RP064



Medium double pulley with 50kN strength, suitable for ropes up to 13mm in diameter.

Conformance: EN 12278

£84.54

ONE-WAY LOCKING DOUBLE PULLEY

RP700



Double pulley with one-way locking bearings, suitable for 10–13mm ropes in rescue and hauling operations.

Conformance: EN 12278

£176.58

STAINLESS STEEL SINGLE PULLEY

RP066



Heavy-duty stainless steel pulley for ropes up to 16mm, with 50kN MBS, ideal for rescue and industrial rigging.

Conformance: EN 12278

£96.42

ROPE DEVICES

ROPE GRAB

RG21



Compact rope grab for 10.5–13mm ropes, featuring a non-aggressive cam and detachable function for rope access safety.

Conformance: EN 567

£90.21

D4 DESCENDER

RP880



High-performance descender with progressive cam action and 240kg WLL, suitable for 10.5–11.5mm ropes.

Conformance: EN 12841 (Type C), ANSI Z359.4, NFPA 1983

£244.86

ASCENDER (RIGHT HAND)

RP220



Double pulley with one-way locking bearings, suitable for 10–13mm ropes in rescue and hauling operations.

Conformance: EN 567, EN 12841, NFPA Compliant

£118.68

DRILL WINCH INC CARRY CASE

DW3



Compact and versatile drill-powered winch for lifting and lowering people or materials, up to 200kg, using a high-torque drill.

Conformance: Machinery Directive 2006/42/EC (Annex 4 Part 17)

£2,300.00

EDGE PROTECTION

CANVAS ROPE PROTECTOR

CRP70

Durable canvas rope protector with Velcro closure and eyelets, measuring 54cm x 70cm, designed to shield ropes from edge abrasion.



Conformance:
Not classified as PPE

£47.08

RIBBED ROPE PROTECTOR

EPPLUS

Durable canvas rope protector with rigid inserts and eyelets, measuring 65cm x 97cm, designed to shield ropes from edge abrasion.



Conformance:
Not classified as PPE

£121.63

CRESTO ROPE BAG (L)

012260243

Spacious rope bag for secure storage and transport of standard length ropes and safety equipment.



Conformance:
Not classified as PPE

£105.63

EDGE ROLLER

ER100-4

Modular edge roller system with four aluminium units, designed to protect ropes (8-16mm) from abrasion over edges.



Conformance:
Not classified as PPE

£141.44

ROPE BAGS

CRESTO ROPE BAG (M)

012260242

Durable medium-size rope bag for compact storage and transport of ropes & essential height safety gear.

CRESTO®



Conformance:
Not classified as PPE

£78.63

CRESTO ROPE BAG (XL)

012260244

High-capacity rope bag built to carry long ropes and bulky gear for demanding work-at-height environments.

CRESTO®



Conformance:
Not classified as PPE

£121.26



CONNECTORS



Our range of connectors provides reliable solutions for linking components in height safety and rescue systems. Choose from maillons for secure, semi-permanent connections, karabiners with various locking mechanisms for quick attachment, and hooks for dependable anchoring. Each connector is built for strength, ease of use, and full compliance with safety standards. Whether for rescue, work positioning, or fall arrest, our connectors provide the critical links you can trust at height.

MAILLONS

DELTA MAILLON

DZ10

High-strength delta-shaped connector with 12mm gate opening and 45kN breaking strength for secure three-way connections.



Conformance:
EN 362, EN 12275

£9.61

OVAL MAILLON

GOZ07

Durable zinc-plated steel oval maillon with 10mm gate opening and 25kN breaking strength for secure connections.



Conformance:
EN 362, EN 12275

£5.54

PEAR MAILLON

PPEPZ10

Robust pear-shaped connector with 20.5mm gate opening and 36kN breaking strength for secure anchoring.



Conformance:
EN 362, EN 12275

£13.98

SEMI-CIRCULAR MAILLON

PPESCZ10

Semi-circular zinc-plated steel connector with 12mm gate opening and 45kN breaking strength for secure harness connections.



Conformance:
EN 362, EN 12275

£14.03

KARABINERS

KLETTSTEIG SCREWGATE KARABINER

K40SGP



The K10DA Oval Twistlock Karabiner is a durable connector crafted from zinc-plated steel, featuring an 16mm gate opening and a minimum breaking strength of 25kN

**Conformance:
EN 362**

£18.27

OVAL TWISTLOCK

K10DA



The K10DA Oval Twistlock Karabiner is a durable connector crafted from zinc-plated steel, featuring an 16mm gate opening and a minimum breaking strength of 25kN

**Conformance:
EN 362**

£13.88

OVAL SCREWGATE

K10SG



The K10SG Oval Screwgate Karabiner is a robust connector crafted from zinc-plated steel, featuring an 18mm gate opening and a minimum breaking strength of 25kN

**Conformance:
EN 362**

£7.02

RESCUE SCREWGATE

C842



High-strength screwgate karabiner with 25mm gate opening and 45kN breaking strength for secure rescue applications.

**Conformance:
EN 362**

£27.65

SCAFFOLD HOOKS

SCAFFOLD TWISTLOCK

K70DAP

The K70DAP Scaffold Twistlock Karabiner is a durable steel connector designed for scaffolding applications.

**Conformance:
EN 362**

£39.00



SNAP SCAFFOLD HOOK

SSE/SSH

High-strength aluminium scaffold hook with 60mm gate opening and 22kN breaking strength for secure structural connections.

**Conformance:
EN 362**

£26.64





ACCESS & ANCHORS

These Access Solutions enable safe, efficient movement in and around confined or elevated spaces. The range includes portable ladders, temporary stairways, and specialist options like the Tuff Exosphere Anchor, and our Container Safe Kit. Designed for efficient setup and reliable performance, each product supports compliant access for inspection, and maintenance tasks. Built for tough environments, our solutions help teams work safely where traditional access isn't always an option.

ANCHOR DEVICES

BEAM CLAMP (105MM-310MM)

CT101.3

Adjustable beam clamp anchor point offering smooth lateral movement and secure fall protection on structural steel.

Conformance:
EN 795 (Type B), ANSI Z359.1-2007

- Adjustable clamp fits beam widths from 105 to 310mm
- Smooth sliding action enhances mobility and productivity
- Durable aluminium and stainless steel construction
- Suitable for fall arrest and restraint systems



£412.82

BEAM CLAMP (305MM-750MM)

CT110.2

High-capacity adjustable beam clamp for fall protection and rope access on large structural I-beams.

Conformance:
EN 795 (Type B), CEN/TS 16415

- Adjustable for large I-beams (305 – 750mm width)
- Suitable for fall protection and rope access
- Rated for single or two-person use in rescue
- Individually serial numbered for asset tracking



£418.66

ACCESS SOLUTIONS

CONTAINER SAFE KIT

CONT

Complete fall protection kit with harness, adjustable restraint, ropes, and connectors for safe work on shipping containers.

Conformance:
EN 361, EN 354,
EN 358, EN 362

£649.80



MODULAR ACCESS STAIR SYSTEM

TUFFSTEP

Light-wight modular adjustable stair system for safe temporary access to a range of sloped terrain, including split-levels, embankments and horizontal walkways.

Conformance:
Not classified as PPE

On Request (£)



HORIZONTAL SYSTEMS

HONOR-T HORIZONTAL FALL ARREST SYSTEM

HONOR-T

25-metre horizontal fall arrest system designed for up to five users, incorporating two 20m TORQ ABRL20 retractable fall arrest devices for reliable fall protection in various working-at-height scenarios.

Conformance:
EN 795 (Type C), EN 360

£3,968.06



HORIZONTAL FALL ARREST SYSTEM (20M)

ABTL20-2

Lightweight and easy-to-install 20-metre horizontal fall arrest system, designed for up to two users, providing reliable fall protection in various working-at-height scenarios.

Conformance:
EN 795 (Type C)

£314.24



MOBILE ANCHOR SYSTEMS

EXOSPHERE ANCHOR SYSTEM

TUFFEXO

Portable overhead fall arrest anchor system with up to 6.1 m height and 136 kg capacity per user for elevated work safety.

Conformance:
EN 795, ANSI Z359.18, OSHA 1926.502, OSHA 1910.140

On Request (£)



EXOSPHERE ANCHOR 4X4

TUFFEXO4X4

Hydraulic all-terrain mobile fall arrest system with 12.8m adjustable anchor height, 4-user capacity, and remote control operation.

Conformance:
EN 795, ANSI Z359.18, OSHA 1926.502, OSHA 1910.140

On Request (£)



TOOL STORAGE & MANAGEMENT

Abtech Safety offers a range of storage solutions. These purposebuilt bags and boxes are designed to meet the demanding needs of professionals in fields such as Utilities, Construction and Rescue. With Abtech Safety, you can trust in durable and reliable storage solutions to keep your equipment, tools, and parts secure and accessible, on the job site or in the field.

STORAGE & TRANSPORT

ABTECH SAFETY KIT BAG

ABBAG

Durable kit bag with zip compartment and padded shoulder straps, designed for carrying harnesses and lanyards.

Conformance:
Not classified as PPE

£16.47



LINE OPS RESCUE BAG

LOPSBAG

High-visibility rescue bag with nine removable pouches and reflective 'RESCUE' panel for organised emergency response.

Conformance:
Not classified as PPE

£529.67



CANVAS TOOL BAG (MEDIUM)

STL9417

Durable medium-sized canvas tool bag with secure clip buckles for attachment to utility harnesses.

Conformance:
Not classified as PPE

£28.91



BOLT BAG

STL9318

Large vinyl bolt bag designed to fit all utility harnesses, providing durable storage for bolts and small tools.

Conformance:
Not classified as PPE

£50.80



TOOL MANAGEMENT

CANVAS TOOL BAG (LARGE)

STL9418

Spacious large canvas tool bag with secure clip buckles for attachment to utility harnesses.

Conformance:
Not classified as PPE

£44.14



CRESTO BOLT BAG (S)

012260222

CRESTO®



Compact bolt and material bag with waterproof construction, one-handed opening, and multiple tool lanyard attachment points.

Conformance:
Not classified as PPE

£43.11

CRESTO BOLT BAG (L)

012260223

CRESTO®



Spacious bolt bag with waterproof material, quick lace lock closure, and tool lanyard attachment system for high-access work.

Conformance:
Not classified as PPE

£48.32

MESH BOLT BAG

RRST35

Durable mesh bolt bag with reinforced straps, designed for secure storage and quick access to bolts and small tools.

Conformance:
Not classified as PPE

£64.26



CRESTO TOOL BUCKET

012260213

CRESTO®



13-litre tool bucket with OnePull locking system, external lanyard loops, and reinforced water-resistant construction.

Conformance:
Not classified as PPE

£89.05

CRESTO TOOLPRO BAG

012260212

CRESTO®



15-litre tool bag with cord-lock closure, reinforced handles, and external loop system for safe and efficient tool storage.

Conformance:
Not classified as PPE

£119.37

TOOL LANYARDS

WRIST STRAP WITH SWIVEL SNAPHOOK

264901309



Slim, adjustable wrist strap with swivel snap hook for secure tool tethering.
Max load: 2kg



Conformance:
Not classified as PPE

£34.48

TOOL HOLDER WITH D-RING

292650108



Durable tool holder with stainless steel D-ring for secure attachment.
Max load: 4kg



Conformance:
Not classified as PPE

£4.87

SPIRAL WIRE - THREE SET KIT

301153607



Set of spiral wire tool lanyards with protective plastic cover and snap hooks.
Max load: 1kg



Conformance:
Not classified as PPE

£26.94

ELASTIC TOOL LANYARD WITH KARABINER

276860103



Elastic lanyard with dual karabiners for secure tool attachment.
Max load: 4kg



Conformance:
Not classified as PPE

£38.12

ELASTIC TOOL LANYARD WITH LOOP & KARABINER

276870102



Elastic lanyard with loop and snap hook for versatile tool attachment.
Max load: 6kg



Conformance:
Not classified as PPE

£18.37

TOOL TETHER SET WITH ROPES

264680117



Comprehensive tool tethering set with elastic strap and fixing cords.
Max load: 4kg



Conformance:
Not classified as PPE

£46.26

TERMS AND CONDITIONS

1. INTERPRETATION

1.1 Definitions:

Business Day: a day other than a Saturday, Sunday or public holiday in England, when banks in London are open for business.

Business Hours: the period from 9.00 am to 5.00 pm on any Business Day.

Conditions: the terms and conditions set out in this document as amended from time to time in accordance with clause 11.3.

Contract: the contract between Abtech Safety Ltd and the Customer for the sale and purchase of the Goods in accordance with these Conditions.

Customer: the person or firm who purchases the Goods from Abtech Safety Ltd.

Delivery Location: has the meaning given in clause 4.2.

Force Majeure Event: an event, circumstance or cause beyond a party's reasonable control.

Goods: the goods (or any part of them) set out in the Order.

Order: the Customer's order for the Goods, as set out in the Customer's purchase order form, the Customer's written acceptance of the Supplier's quotation, or overleaf, as the case may be.

Specification: any specification for the Goods, including any related plans and drawings, that is agreed by the Customer and Abtech Safety Ltd.

Supplier: Abtech Safety Ltd (registered in England and Wales with company number 02656103).

1.2 Interpretation

(a) A person includes a natural person, corporate or unincorporated body (whether or not having separate legal personality).

(b) A reference to a party includes its successors and permitted assigns.

(c) A reference to legislation or a legislative provision is a reference to it as amended or re-enacted. A reference to legislation or a legislative provision includes all subordinate legislation made under that legislation or legislative provision.

(d) Any words following the terms including, include, in particular, for example or any similar expression shall be interpreted as illustrative and shall not limit the sense of the words preceding those terms.

(e) A reference to writing or written excludes fax and email.

2. BASIS OF CONTRACT

2.1 These Conditions apply to the Contract to the exclusion of any other terms that the Customer seeks to impose or incorporate, or which are implied by law, trade custom, practice or course of dealing.

2.2 The Order constitutes an offer by the Customer to purchase the Goods in accordance with these Conditions. The Customer is responsible for ensuring that the terms of the Order and any applicable Specification submitted by the Customer are complete and accurate.

2.3 The Order shall only be deemed to be accepted when Abtech Safety Ltd issues a written acceptance of the Order, at which point the Contract shall come into existence.

2.4 The Customer waives any right it might otherwise have to rely on any term endorsed upon, delivered with or contained in any documents of the Customer that is inconsistent with these Conditions.

2.5 Any samples, drawings, descriptive matter or advertising produced by Abtech Safety Ltd and any descriptions or illustrations contained in Abtech Safety Ltd's catalogues or brochures are produced for the sole purpose of giving an approximate idea of the Goods referred to in them. They shall not form part of the Contract nor have any contractual force.

2.6 A quotation for the Goods given by Abtech Safety Ltd shall not constitute an offer. A quotation shall only be valid for a period of 30 calendar days from its date of issue.

3. GOODS

3.1 The Goods are described in the Specification.

3.2 The Customer shall indemnify Abtech Safety Ltd against all liabilities, costs, expenses, damages and losses (including any direct, indirect or consequential losses, loss of profit, loss of reputation and all interest, penalties and legal and other reasonable professional costs and expenses) suffered or incurred by Abtech Safety Ltd in connection with any claim made against Abtech Safety Ltd for actual or alleged infringement of a third party's intellectual property rights arising out of or in connection with Abtech Safety Ltd's use of the Specification. This clause 3.2 shall survive termination of the Contract.

3.3 Abtech Safety Ltd reserves the right to amend the Specification if required by any applicable statutory or regulatory requirement, and Abtech Safety Ltd shall notify the Customer in any such event.

4. DELIVERY

4.1 Abtech Safety Ltd shall ensure that each delivery of the Goods is accompanied by a delivery note that shows the date of the Order, the contract number, the type and quantity of the Goods.

4.2 Abtech Safety Ltd shall deliver the Goods to the location set out in the Order or such other location as the parties may agree (Delivery Location) at any time after Abtech Safety Ltd notifies the Customer that the Goods are ready.

4.3 Delivery is completed on the completion of unloading of the Goods at the Delivery Location.

4.4 Any dates quoted for delivery are approximate only, and the time of delivery is not of the essence. Abtech Safety Ltd shall not be liable for any delay in delivery of the Goods that is caused by a Force Majeure Event or the Customer's failure to provide Abtech Safety Ltd with adequate delivery instructions or any other instructions that are relevant to the supply of the Goods.

4.5 If Abtech Safety Ltd fails to deliver the Goods, its liability shall be limited to the costs and expenses incurred by the Customer in obtaining replacement goods of similar description and quality in the cheapest market available, less the price of the Goods. Abtech Safety Ltd shall have no liability for any failure to deliver the Goods to the extent that such failure is caused by a Force Majeure Event or the Customer's failure to provide Abtech Safety Ltd with adequate delivery instructions or any other instructions that are relevant to the supply of the Goods.

4.6 If the Customer fails to accept delivery of the Goods within 10 Business Days of Abtech Safety Ltd notifying the Customer that the Goods are ready, then, except where such failure or delay is caused by a Force Majeure Event or Abtech Safety Ltd's failure to comply with its obligations under the Contract in respect of the Goods:

- (a) delivery of the Goods shall be deemed to have been completed at 9:00 am on the third Business Day after the day on which Abtech Safety Ltd notified the Customer that the Goods were ready; and
- (b) Abtech Safety Ltd shall store the Goods until actual delivery takes place, and charge the Customer for all related costs and expenses (including insurance).

4.7 If 30 Business Days after the day on which Abtech Safety Ltd notified the Customer that the Goods were ready for delivery the Customer has not taken actual delivery of them, Abtech Safety Ltd may resell or otherwise dispose of part or all of the Goods and, after deducting reasonable storage and selling costs, charge the Customer for any shortfall below the price of the Goods.

4.8 Abtech Safety Ltd may deliver the Goods by instalments, which shall be invoiced and paid for separately. Each instalment shall constitute a separate contract. Any delay in delivery or defect in an instalment shall not entitle the Customer to cancel any other instalment.

5. QUALITY

5.1 Abtech Safety Ltd warrants that on delivery the Goods shall:

- (a) conform with the Specification; and
- (b) be free from material defects in design, material and workmanship.

5.2 Subject to clause 5.3, if:

- (a) the Customer gives notice in writing to Abtech Safety Ltd within a reasonable time of discovery that some or all of the Goods do not comply with the warranty set out in clause 5.1;
- (b) Abtech Safety Ltd is given a reasonable opportunity of examining such Goods; and
- (c) the Customer (if asked to do so by Abtech Safety Ltd) returns such Goods to Abtech Safety Ltd's place of business at the Customer's cost, Abtech Safety Ltd shall, at its option, repair or replace the defective Goods, or refund the price of the defective Goods in full.

5.3 Abtech Safety Ltd shall not be liable for the Goods' failure to comply with the warranty set out in clause 5.1 if:

- (a) the Customer makes any further use of such Goods after giving notice in accordance with clause 5.2;
- (b) the defect arises because the Customer failed to follow Abtech Safety Ltd's oral or written instructions as to the storage, commissioning, installation, use and maintenance of the Goods or (if there are none) good trade practice regarding the same;
- (c) the defect arises as a result of Abtech Safety Ltd following any drawing, design or specification supplied by the Customer;
- (d) the Customer alters or repairs such Goods without the written consent of Abtech Safety Ltd;
- (e) the defect arises as a result of fair wear and tear, wilful damage, negligence, or abnormal storage or working conditions; or
- (f) the Goods differ from the Specification as a result of changes made to ensure they comply with applicable statutory or regulatory requirements.

5.4 Except as provided in this clause 5, Abtech Safety Ltd shall have no liability to the Customer in respect of the Goods' failure to comply with the warranty set out in clause 5.1.

5.5 The terms implied by sections 13 to 15 of the Sale of Goods Act 1979 are, to the fullest extent permitted by law, excluded from the Contract.

5.6 These Conditions shall apply to any repaired or replacement Goods supplied by Abtech Safety Ltd.

6. TITLE AND RISK

6.1 The risk in the Goods shall pass to the Customer on completion of delivery.

6.2 Title to the Goods shall not pass to the Customer until Abtech Safety Ltd receives payment in full (in cash or cleared funds) for the Goods and any other goods that Abtech Safety Ltd has supplied to the Customer, in which case title to the Goods shall pass at the time of payment of all such sums

6.3 Until title to the Goods has passed to the Customer, the Customer shall:

- (a) store the Goods separately from all other goods held by the Customer so that they remain readily identifiable as Abtech Safety Ltd's property;
- (b) not remove, deface or obscure any identifying mark or packaging on or relating to the Goods;
- (c) maintain the Goods in satisfactory condition and keep them insured against all risks for their full price from the date of delivery;
- (d) notify Abtech Safety Ltd immediately if it becomes subject to any of the events listed in clause 9.1(b) to clause 9.1(d).

6.4 At any time before title to the Goods passes to the Customer, Abtech Safety Ltd may require the Customer to deliver up all Goods in its possession that have not been resold, or irrevocably incorporated into another product.

7. PRICE AND PAYMENT

7.1 The price of the Goods shall be the price set out in the Order.

7.2 Abtech Safety Ltd may, by giving notice to the Customer at any time before delivery, increase the price of the Goods to reflect any increase in the cost of the Goods that is due to:

- (a) any factor beyond Abtech Safety Ltd's control (including foreign exchange fluctuations, increases in taxes and duties, and increases in labour, materials and other manufacturing costs);
- (b) any request by the Customer to change the delivery date(s), quantities or types of Goods ordered, or the Specification; or
- (c) any delay caused by any instructions of the Customer or failure of the Customer to give Abtech Safety Ltd adequate or accurate information or instructions.

7.3 The price of the Goods:

- (a) excludes amounts in respect of value added tax (VAT), which the Customer shall additionally be liable to pay to Abtech Safety Ltd at the prevailing rate, subject to the receipt of a valid VAT invoice; and
- (b) excludes the costs and charges of packaging, insurance and transport of the Goods, which shall be invoiced to the Customer

7.4 Abtech Safety Ltd may invoice the Customer for the Goods before or at any time after the completion of delivery.

7.5 The Customer shall pay each invoice submitted by Abtech Safety Ltd:

- (a) within 30 days of the date of the invoice; and
- (b) in full and in cleared funds to a bank account nominated in writing by Abtech Safety Ltd, and
- (c) time for payment shall be of the essence of the Contract.

7.6 If the Customer fails to make a payment due to Abtech Safety Ltd under the Contract by the due date, then, without limiting Abtech Safety Ltd's remedies under clause 9, the Customer shall pay interest on the overdue

sum from the due date until payment of the overdue sum, whether before or after judgment. Interest under this clause 7.6 will accrue each day at 4% a year above the Bank of England's base rate from time to time, but at 4% a year for any period when that base rate is below 0%.

7.7 All amounts due under the Contract shall be paid in full without any set-off, counterclaim, deduction or withholding (other than any deduction or withholding of tax as required by law).

8. LIMITATION OF LIABILITY

8.1 Abtech Safety Ltd has been unable to obtain insurance in respect of certain types of loss at a commercially viable price.

8.2 The restrictions on liability in this clause 8 apply to every liability arising under or in connection with the Contract including liability in contract, tort (including negligence), misrepresentation, restitution or otherwise.

8.3 Nothing in the Contract limits any liability which cannot legally be limited, including liability for:

- (a) death or personal injury caused by its negligence, or the negligence of its employees, agents or subcontractors (as applicable);
- (b) fraud or fraudulent misrepresentation;
- (c) breach of the terms implied by section 12 of the Sale of Goods Act 1979; or
- (d) defective products under the Consumer Protection Act 1987.

8.4 Subject to clause 8.3, Abtech Safety Ltd's total liability to the Customer shall not exceed £1,000.

8.5 Subject to clause 8.3, the following types of loss are wholly excluded:

- (a) loss of profits;
- (b) loss of sales or business;
- (c) loss of agreements or contracts;
- (d) loss of anticipated savings;
- (e) loss of use or corruption of software, data or information;
- (f) loss of or damage to goodwill; and
- (g) indirect or consequential loss.

8.6 This clause 8 shall survive termination of the Contract.

9. TERMINATION

9.1 Without limiting its other rights or remedies, Abtech Safety Ltd may terminate this Contract with immediate effect by giving written notice to the Customer if:

- (a) the Customer commits a material breach of any term of the Contract and (if such a breach is remediable) fails to remedy that breach within 10 days of that party being notified in writing to do so;
- (b) the Customer takes any step or action in connection with its entering administration, provisional liquidation or any composition or arrangement with its creditors (other than in relation to a solvent restructuring), obtaining a moratorium, being wound up (whether voluntarily or by order of the court, unless for the purpose of a solvent restructuring), having a receiver appointed to any of its assets or ceasing to carry on business;
- (c) the Customer suspends, threatens to suspend, ceases or threatens to cease to carry on all or a substantial part of its business; or
- (d) the Customer's financial position deteriorates so far as to reasonably justify the opinion that its ability to give effect to the terms of the Contract is in jeopardy.

9.2 Without limiting its other rights or remedies, Abtech Safety Ltd may suspend provision of the Goods under the Contract or any other contract between the Customer and Abtech Safety Ltd if the Customer becomes subject to any of the events listed in clause 9.1(b) to clause 9.1(d), or Abtech Safety Ltd reasonably believes that the Customer is about to become subject to any of them, or if the Customer fails to pay any amount due under this Contract on the due date for payment.

9.3 Without limiting its other rights or remedies, Abtech Safety Ltd may terminate the Contract with immediate effect by giving written notice to the Customer if the Customer fails to pay any amount due under the Contract on the due date for payment.

9.4 On termination of the Contract for any reason the Customer shall immediately pay to Abtech Safety Ltd all of Abtech Safety Ltd's outstanding unpaid invoices and interest and, in respect of Goods supplied but for which no invoice has been submitted, Abtech Safety Ltd shall submit an invoice, which shall be payable by the Customer immediately on receipt.

9.5 Termination or expiry of the Contract, however arising, shall not affect any of the parties' rights and remedies that have accrued as at termination or expiry, including the right to claim damages in respect of any breach of the Contract which existed at or before the date of termination or expiry.

9.6 Any provision of the Contract that expressly or by implication is intended to come into or continue in force on or after termination or expiry of the Contract shall remain in full force and effect.

10. FORCE MAJEURE

Neither party shall be in breach of the Contract or otherwise liable for any failure or delay in the performance of its obligations if such delay or failure results from a Force Majeure Event. The time for performance of such obligations shall be extended accordingly. If the period of delay or non-performance continues for two months, the party not affected may terminate the Contract by giving 30 days' written notice to the affected party.

11. GENERAL

11.1 Assignment and other dealings.

(a) Abtech Safety Ltd may at any time assign, transfer, mortgage, charge, subcontract, delegate, declare a trust over or deal in any other manner with all or any of its rights or obligations under the Contract.

(b) The Customer may not assign, transfer, mortgage, charge, subcontract, delegate, declare a trust over or deal in any other manner with any or all of its rights or obligations under the Contract without the prior written consent of Abtech Safety Ltd.

11.2 Entire agreement.

(a) The Contract constitutes the entire agreement between the parties.

(b) Each party acknowledges that in entering into the Contract it does not rely on any statement, representation, assurance or warranty (whether made innocently or negligently) that is not set out in the Contract. Each party agrees that it shall have no claim for innocent or negligent misrepresentation or negligent misstatement based on any statement in the Contract.

11.3 Variation.

No variation of this Contract shall be effective unless it is in writing and signed by the parties (or their authorised representatives).

11.4 Waiver.

(a) A waiver of any right or remedy is only effective if given in writing and shall not be deemed a waiver of any subsequent right or remedy.

(b) A delay or failure to exercise, or the single or partial exercise of, any right or remedy shall not waive that or any other right or remedy, nor shall it prevent or restrict the further exercise of that or any other right or remedy.

11.5 Severance.

If any provision or part-provision of the Contract is or becomes invalid, illegal or unenforceable, it shall be deemed deleted, but that shall not affect the validity and enforceability of the rest of the Contract. If any provision of the Contract is deemed deleted under this clause 11.5 the parties shall negotiate in good faith to agree a replacement provision that, to the greatest extent possible, achieves the intended commercial result of the original provision.

11.6 Notices.

(a) Any notice or other communication given to a party under or in connection with the Contract shall be in writing and shall be delivered by hand or by pre-paid firstclass post or other next working day delivery service at its registered office (if a company) or its principal place of business (in any other case).

(b) Any notice shall be deemed to have been received

(i) if delivered by hand, at the time the notice is left at the proper address; and

(ii) if sent by pre-paid first-class post or other next working day delivery service, at 9:00 am on the two Business Day after posting.

(c) This clause does not apply to the service of any proceedings or other documents in any legal action or, where applicable, any arbitration or other method of dispute resolution.

11.7 Third party rights.

The Contract does not give rise to any rights under the Contracts (Rights of Third Parties) Act 1999 to enforce any term of the Contract.

11.8 Governing law.

The Contract, and any dispute or claim (including non-contractual disputes or claims) arising out of or in connection with it or its subject matter or formation, shall be governed by and construed in accordance with the law of England and Wales.

11.9 Jurisdiction. Each party irrevocably agrees that the courts of England and Wales shall have exclusive jurisdiction to settle any dispute or claim (including noncontractual disputes or claims) arising out of or in connection with the Contract or its subject matter or formation.

PRODUCT INDEX

Code	Product	Page	Code	Product	Page
1118	Fusion Active Harness	32	012263105	Crown Electro Helmet	35
1123	Worker Pro Harness	31	1.75MINISHOCKCR	1.75m Cut Resistant Rope Fall Arrest Lanyard	39
1136	Energy Pro Harness	32	1136WIND	Energy Pro Wind Harness	32
1137	Fusion Active Wind Harness	32	1154R	Core Active Rescue Harness	31
1138	Fusion Pro Wind Harness	33	120POLECAT	Polecat Pole Choker	37
1151	Core Base Single Point Harness	31	1503H	2m Rope Fall Arrest Lanyard with Hook	39
1154	Core Active Two Point Harness	31	1504H	1.5m Twin Rope Fall Arrest Lanyard with Hooks	39
1165	Rigger Base Harness	33	1505H	2m Fall Arrest Lanyard with Hook	38
1505	1.7m Single Fall Arrest Lanyard	38	1507H	1.8m Flex Fall Arrest Lanyard with Hook	38
30019	Sleeve Cap	18	1508H	1.8m Twin Flex Fall Arrest Lanyard with Hooks	38
30021	Flush Floor Mount - Existing Concrete	17	2342-1.5	1.5m Work Positioning Lanyard	36
30023	Flush Floor Mount - Fresh Concrete	17	2342-2	2m Work Positioning Lanyard	36
30029	Adjustable Barrel Mount 57mm - 635mm	19	2342-5	5m Work Positioning Lanyard	37
30031	Davit Floor Mount	17	30029KIT	Adjustable Barrel Mount Kit	22
30032	Davit Wall Mount	17	30036KIT	57mm Barrel Mount Kit	22
30036	Fixed Barrel Mount 57mm (2.25")	19	30040KIT	Pole Hoist Kit	23
30073	Counterweight Base	18	30070KIT	4 Piece Base Kit	22
30104	Small Upper Davit 0.71m - 1.39m	15	30073KIT	Counterweight Kit	22
30105	Large Upper Davit 0.71m - 1.67m	15	30073KIT-WB	Counterweight Kit c/w Weight Boxes	22
30108	Small Lower Davit 1.01m	15	30093KIT	Vehicle Hitch Mount Kit	23
30109	Large Lower Davit 1.32m	15	30161KIT	127mm Barrel Mount Kit	23
30161	Fixed Barrel Mount 127mm (5")	19	30166KIT	181mm Barrel Mount Kit	23
30166	Fixed Barrel Mount 181mm (7")	19	30234/235	Horizontal Entry System - Post and Arm	21
30557	Small Analog Davit 2.1m height 1.2m reach	16	30321/235	Horizontal Entry System - Clamp and Arm	21
50048	Large Analog Davit 2.8m height 1.9m reach	16	60176/2	AB15RT to Davit Bracket	20
60005	30m TUFF Personnel Winch	29	90115-BSH	Chokestrap Pole Choker	37
60011	45m TUFF Personnel Winch	29	90115-SP	Chokestrap Pole Choker	37
60209	Davit Bracket	20	90115-WPS	Chokestrap Pole Choker	37
60257	30m TUFF Materials Winch	29	90176-2M-CR	Rope Rat Work Positioning Lanyard	37
60294	Analog Davit Bracket	20	AB15RT	15m TORQ Fall Arrest Winch	28
71493	Davit Barrel Mount Kit Box	23	AB15T	15m TORQ Fall Arrest	25
264680117	Tool Tether Set with Ropes	66	AB30RT	30m TORQ Max Fall Arrest Winch	28
264901309	Wrist Strap, Swivel Snap Hook	66	AB30T	30m TORQ Max Fall Arrest	25
276860103	Elastic Lanyard with Two Karabiners	66	ABBAG	Kit Bag	63
276870102	Elastic Lanyard with One Karabiner and Loop	66	ABBC	Bosuns Chair	35
292650108	Tool Holder with D Ring	66	ABLSS	Leg Suspension Strop	35
301153607	Spiral Wire, Three Set Kit	66	ABNAP	Rescue Nappy	35
8110222100	RESQ SOLO X Wind (100m)	49	ABR05	Nylon Rope with Plastic Eyes (5m)	52
012230117	Smartline X (15m)	48	ABR10	Nylon Rope with Plastic Eyes (10m)	52
012230118	Smartline X (25m)	48	ABR15	Nylon Rope with Plastic Eyes (15m)	52
012230132	Smartline X Ultra Vacuum (100m)	49	ABR20	Nylon Rope with Plastic Eyes (20m)	53
012255022	Cresto, NEON-Sling 9285, 20, 0.6m	40	ABRALF	15m 2 Way Locking Rescue System	50
012255024	Cresto, NEON-Sling 9285, 20, 0.8m	40	ABRL03W	3m TORQ Lite Webbing Fall Arrest	26
012255026	Cresto, NEON-Sling 9285, 20, 1.0m	40	ABRL06	6m TORQ Lite Wire Fall Arrest	24
012255028	Cresto, NEON-Sling 9285, 20, 1.2m	40	ABRL06W	6m TORQ Lite Webbing Fall Arrest	26
012255029	Cresto, NEON-Sling 9285, 20, 1.5m	41	ABRL10	10m TORQ Lite Wire Fall Arrest	24
012260212	ToolPro Bag	65	ABRL20	20m TORQ Lite Wire Fall Arrest	25
012260213	Tool Bucket	65	ABRSTADJ	Adjustable Restraint Lanyard	36
01226022	Cresto Bolt Bag, Large	65	ABSS/407	Adjustable Stretcher Positioning Strops	46
012260222	Cresto Bolt Bag, Small	65	ABTL20-2	20m Horizontal System	61
012260242	Cresto, Rope bag size M 65x22 cm	56	APK1	Access Platform Kit	34
012260243	Cresto, Rope bag size L, 68x25 cm	56	ASC-ST001	Work Seat	35
012260244	Cresto, Rope bag size XL, 87x33 cm	56	BSPER+SB-A	Personal Plus Safety Belt	35

Code	Product	Page	Code	Product	Page
C842	Rescue Screwgate	58	RS100	Rollable Rescue Stretcher	44
CONT	Container Safe System	61	RT07	Rescue Tripod Carry Bag	14
CRP70	Canvas Rope Protector	56	RT3	Two Person Rescue Tripod	7
CSRT1KIT	RT3 Confined Space Kit 1	11	SLIX100	Rollable Rescue Stretcher	42
CSRT2KIT	RT3 Confined Space Kit 2	11	SLIX100KIT	Stretcher Kit	44
CSRT3KIT	RT3 Confined Space Kit 3	11	SLIX100XL	Bariatric Rescue Stretcher	42
CSRT4KIT	RT3 Confined Space Kit 4	12	SLIX100XLKIT	Bariatric Rescue Stretcher Kit	44
CSRT5KIT	RT3 Confined Space Kit 5	12	SLIX50COM	Rollable Rescue Stretcher with Spinal Splint	43
CSRT6KIT	RT3 Confined Space Kit 6	12	SLIXBAG	Rolltop Carry Bag for SLIX Stretchers	47
CSRT7KIT	RT3 Confined Space Kit 7	13	SLIXHALV	Rollable Half Rescue Stretcher	42
CSRT8KIT	RT3 Confined Space Kit 8	13	SLIXHXL	Horizontal Stretcher Lifting Bridles	46
CST1KIT	T3 Confined Space Kit 1	8	SLIXRR	Rollable Rapid Response Rescue Stretcher	43
CST2KIT	T3 Confined Space Kit 2	8	SLIXRRBAG	Carry Bag for Rapid Response Stretcher	47
CST3KIT	T3 Confined Space Kit 3	8	SLIXSS	SLIX Spinal Splint	45
CST4KIT	T3 Confined Space Kit 4	9	SLIXVHH	Vertical & Horizontal Stretcher Lifting Bridles	46
CST5KIT	T3 Confined Space Kit 5	9	SLIXVHXL	Vertical Stretcher Lifting Bridles	46
CST6KIT	T3 Confined Space Kit 6	9	SLIXWS	Wire Stretcher Anchor Strops	47
CST7KIT	T3 Confined Space Kit 7	10	SSE/SSH	Large Scaffold Snap Hook	59
CST8KIT	T3 Confined Space Kit 8	10	ST/044	Basket Stretcher	43
CT101.3	Beam Clamp 105mm-310mm	60	STL-PTR-NPG	20m Pole Top Rescue Kit	51
CT110.2	Beam Clamp 305mm-750mm	60	STL9318	Bolt Bag	64
DW3	Drill Winch inc Carry Case	55	STL9417	Canvas Tool Bag - small	63
DZ10	Delta Maillon	57	STL9418	Canvas Tool Bag - large	63
EF5102	Spinal Splint	45	T05T	AB15RT to Tripod Bracket	14
EF5102/2	Spinal Splint with Floatation Aid	45	T05T-30	AB30RT to Tripod Bracket	14
EPPLUS	Ribbed Rope Protector	56	T05T-30D	AB30RT to Davit Bracket	20
ER100-4	Edge Roller	56	T05TW2	Tuff Winch to Tripod Bracket	14
EU39	Winch Box with Foam Inserts	30	T07	Tripod Carry Bag	14
F8	Heat Shrunk Knotted Rope	53	T3	Two Person Tripod	7
FAK1	Fall Arrest Harness Kit	34	TORQBAG	Carry Bag for TORQ Devices	30
GOZ07	Oval Maillon	57	TOWERRESQKIT	60m Tower Rescue Kit	51
H2.0-9666	2m TORQ Micro Fall Arrest with Swivel Hook	26	TUFFEXO	Exosphere Anchor	62
H2.0-9680	2m TORQ Micro Fall Arrest with Large Hook	27	TUFFEXO4X4	Exosphere Anchor 4x4	62
H2.0-T-9680	2m TORQ Micro Twin Fall Arrest with Large Hooks	27	TUFFSTEP	Tuff Temporary Access Steps	61
H3.5-9680	3.5m TORQ Micro Fall Arrest with Large Hook	27	UH232	STL Tech Work Positioning Harness	33
HONOR-T	Horizontal Fall Arrest System	61	UH238	STL Tech Work Positioning Harness	33
K10DA	Oval Twistlock Karabiner	58	UH238LB	STL Tech Harness with Leather Belt	33
K10SG	Oval Screwgate Karabiner	58	VRS	15m Vertical Rescue System	50
K40SGP	Klettersteig Screwgate Karabiner	58	VWR1	15m Vertical Work & Rescue System	50
K70DAP	Scaffold Twistlock	59	WAHK1	Working At Height Kit 1	34
LADDERKIT	Ladder Rescue Kit	50	WAHK2	Working At Height Kit 2	34
LOPSBAG	Line Ops Bag	63	WAHK3	Working At Height Kit 3	34
LR/11/1	1m of 11mm Static Rope	53	WEIGHT30	2 x 15kg Weight Plates	18
LR/11/100	100m of 11mm Static Rope	53	WEIGHTBOX	Weight Box for Counterweight Base	18
LR/11/200	200m of 11mm Static Rope	53	WINCHBAG	Carry Bag for Winches	30
LR/11/50	50m of 11mm Static Rope	53	WS100	1m Wire Anchor Sling	41
MEWP20	20m MEWP Evacuation Kit	51	WS150	1.5m Wire Anchor Sling	41
PFLK20	20kg Hand Test Weight	18	WS200	2m Wire Anchor Sling	41
PPEPZ10	Pear Maillon	57			
PPESCZ10	Semi-Circular Maillon	57			
RG21	Rope Grab 9mm-13mm	55			
RLN50	50kg Adult Duty Range Manikin	51			
RP030	Small Double Pulley	54			
RP064	Medium Double Pulley	54			
RP066	Stainless Steel Single Pulley	54			
RP220	Right Hand Ascender	55			
RP700	Large Double Pulley	54			
RP880	D4 Descender	55			
RPX200	RESQ Red Pro X (100m)	48			
RRST35	Mesh Bolt Bag	64			



Prepare. Protect. Excel.



Unit 38, Drive B
First Avenue
Deeside Industrial Estate
Flintshire, CH5 2NU
United Kingdom

E: sales@abtechsafety.com
T: +44 (0) 1244 837 050
W: www.abtechsafety.com